

ANR Monthly Customer Update

SEPTEMBER 2022

SEPTEMBER 21, 2022



Agenda



- 1. Safety moment and TC Energy update**
DeAnna Parsell, Noms & Scheduling
- 2. Storage update**
Eric Tawney, Operations Planning
- 3. Operational update**
Kevin Pham, Operations Planning
- 4. Noms & scheduling update**
DeAnna Parsell, Noms & Scheduling

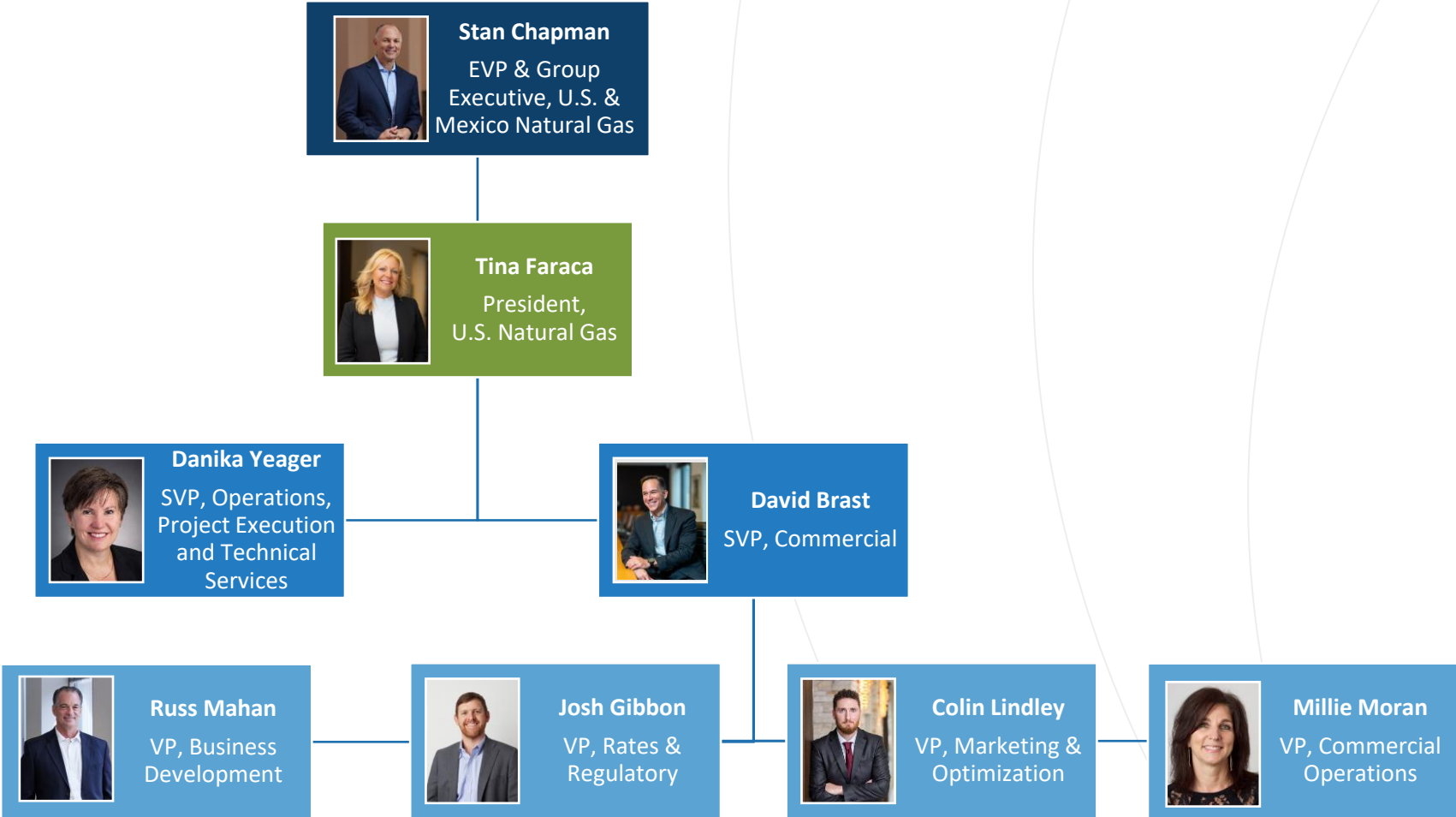


HURRICANE SEASON

Safety moment: Hurricane preparedness

- Stock up on and keep car full of gas
- Bring patio furniture and outdoor items inside
- Protect your home to reduce damage
- If recommended: turn off gas, water and other utilities
- Purchase a battery-powered radio
- Keep cash on hand
- Keep First-aid kit and cell phone chargers available
- Stock up on food and supplies
- Understand your insurance policy
- Stock up on infant and pet supplies as needed

USNG & Commercial leaders

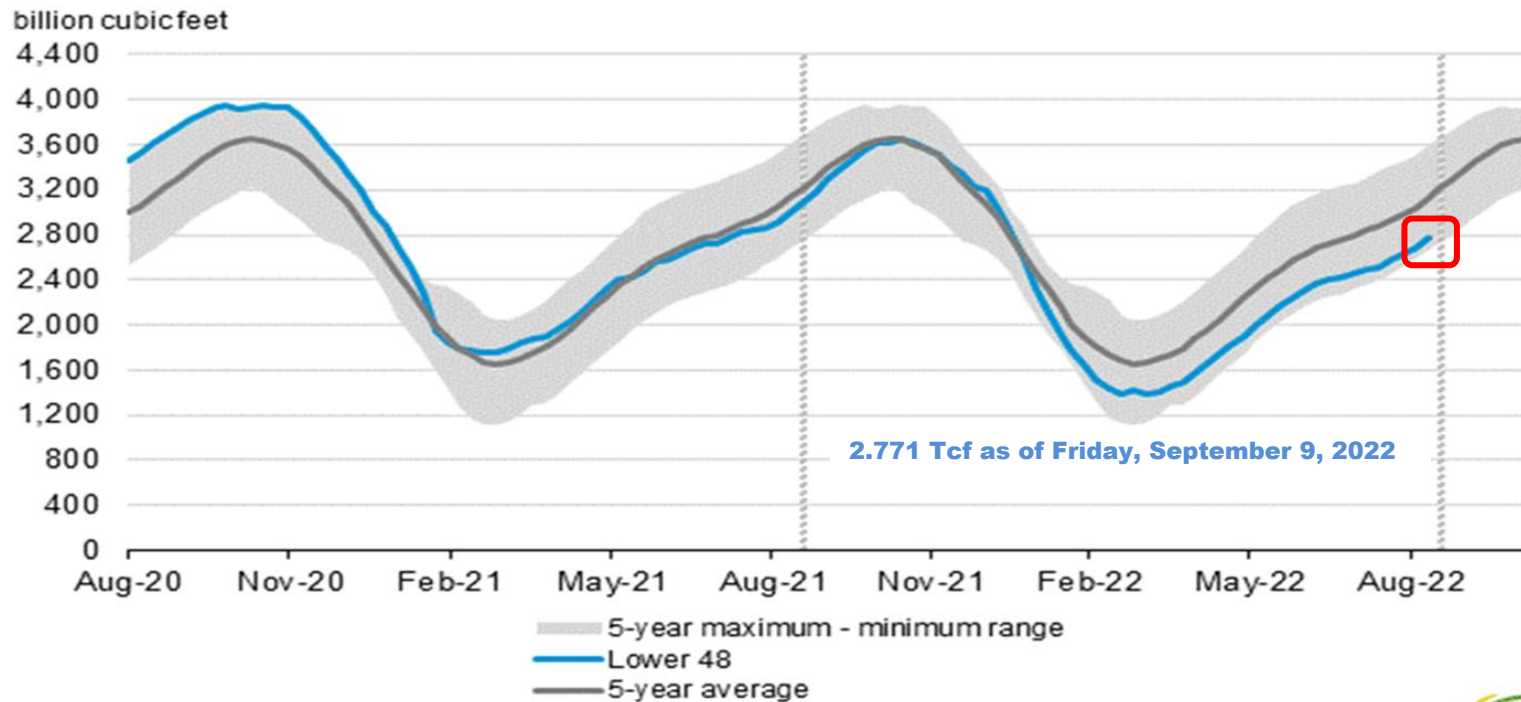


Storage update

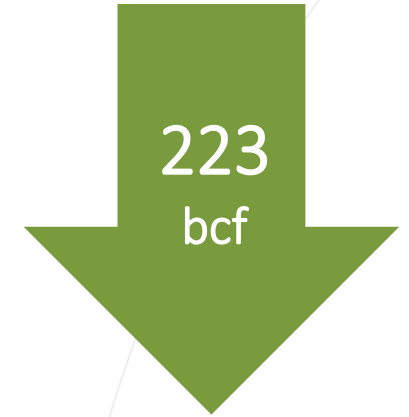
Eric Tawney – Operations Planning

EIA storage position: The big picture

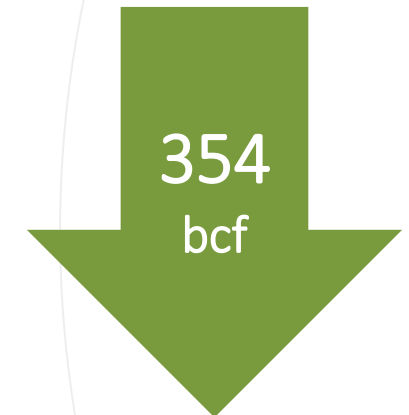
Working gas in underground storage compared with the five-year maximum and minimum



Source: U.S. Energy Information Administration



less than September 2021

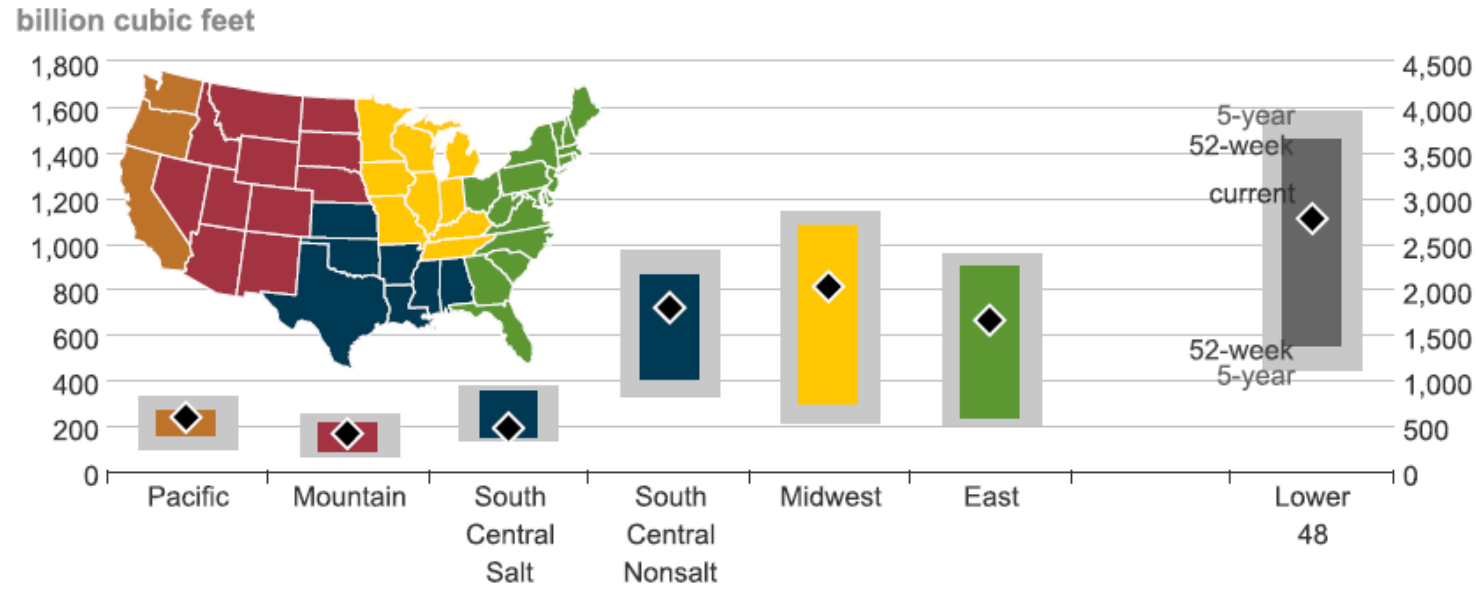


*below the
five-year average*



EIA storage position: The big picture

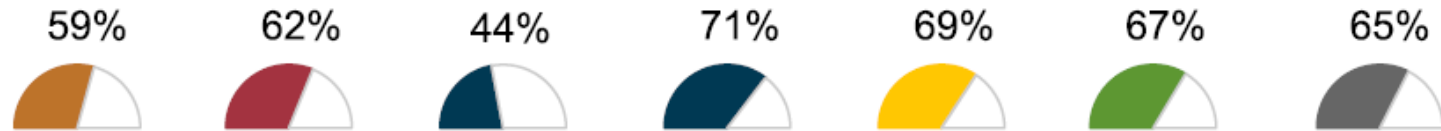
Underground working natural gas storage summary as of September 9, 2022



Lower 48
 current: 2,771
 5-year min: 1,107
 5-year max: 3,958
 52-week min: 1,382
 52-week max: 3,644

Midwest
 current: 809
 5-year min: 211
 5-year max: 1,139
 52-week min: 293
 52-week max: 1,079

Underground storage capacity utilization

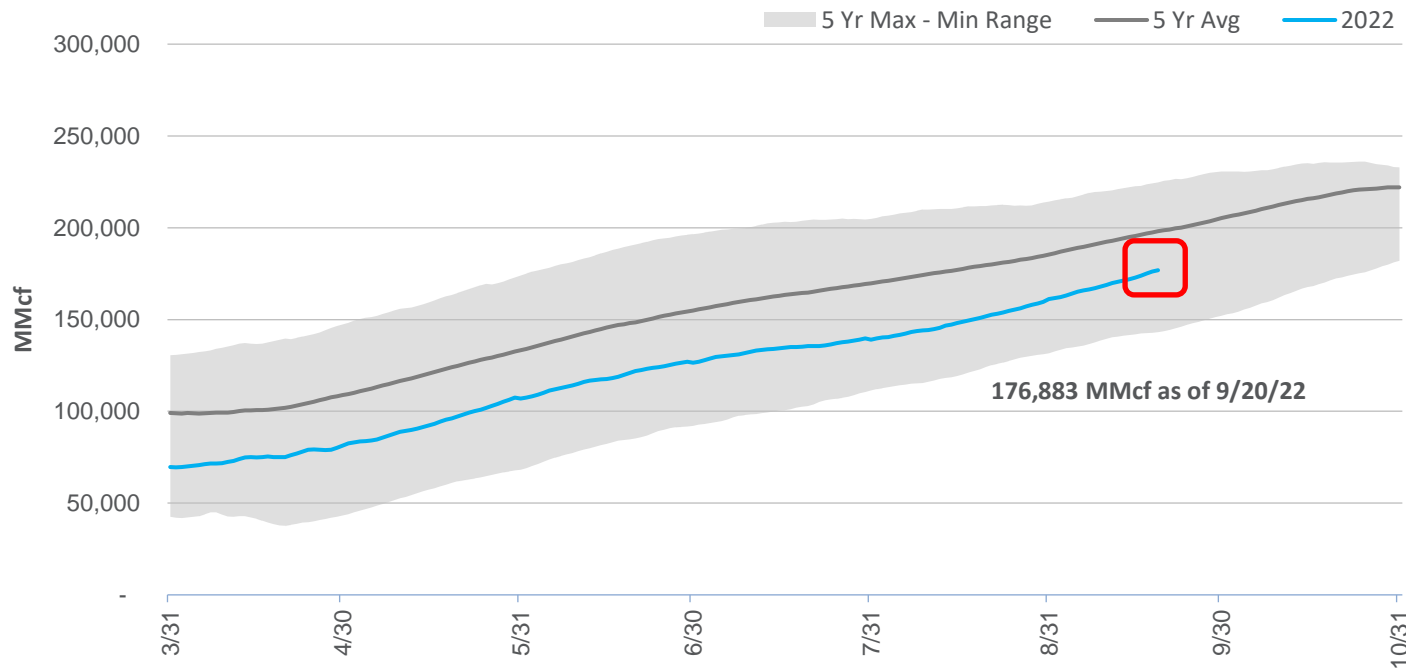


Source: U.S. Energy Information Administration

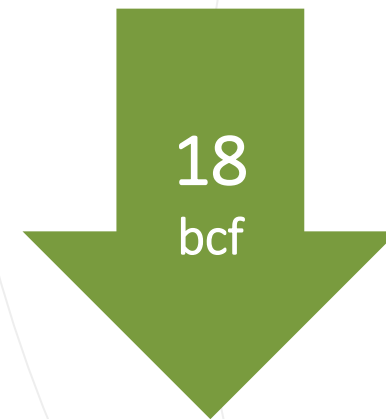


Storage position

Working gas in underground storage compared with the five-year maximum and minimum



less than September 2021

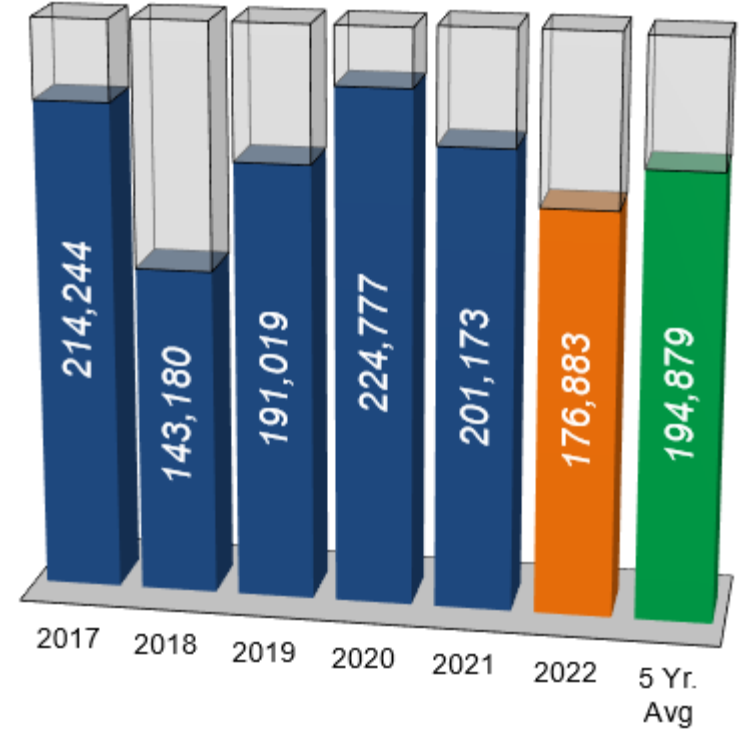


*below the
five-year average*



Storage operations

- From Wednesday, August 23 – Tuesday, September 20, storage activity averaged an injection rate of 820-MMcf/d. Daily injection rate activity varied from a high of 1.2-Bcf/d to a low of 454-MMcf/d.
- Storage capacity is 71 percent full with roughly five weeks left in the injection season.
- ANR has met all firm customer demand for storage activity.
- There are currently no postings restricting storage activity and no planned restrictions on DDS capacity.



**Total Storage is
71% Full**

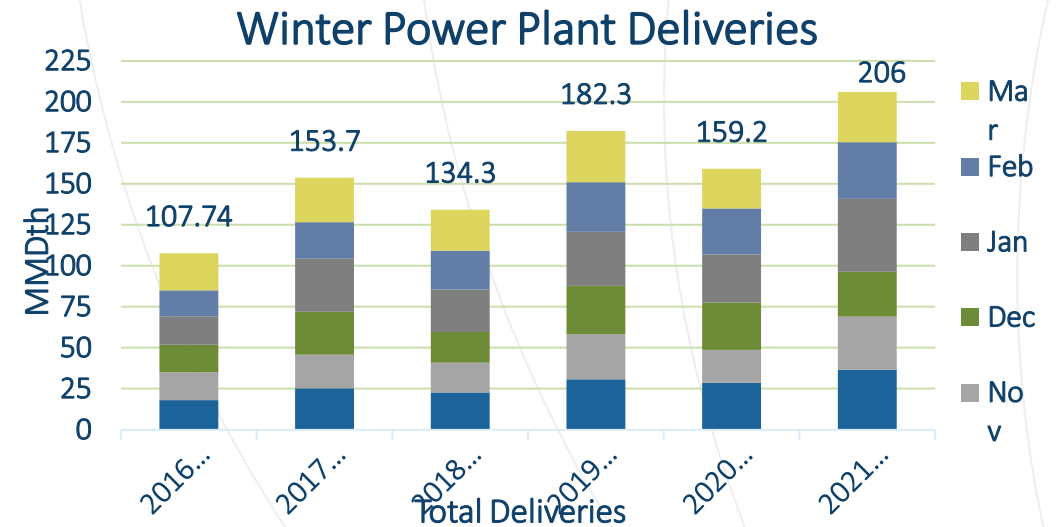
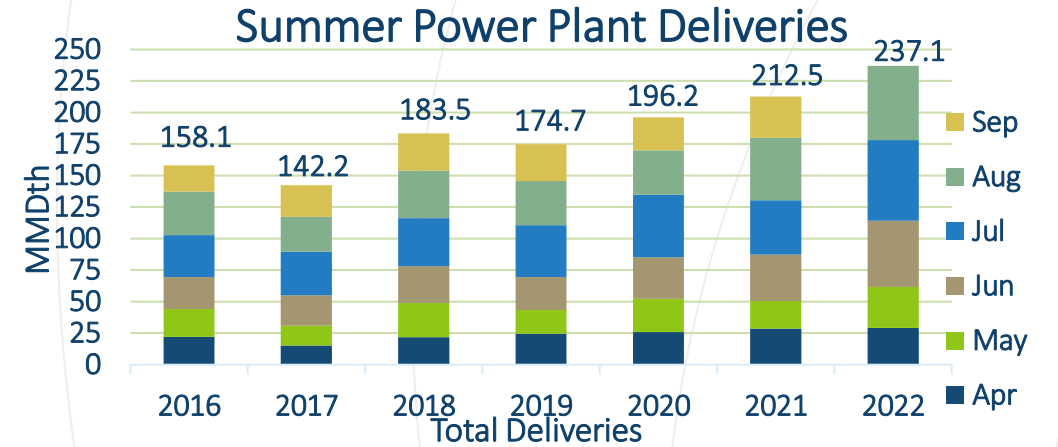
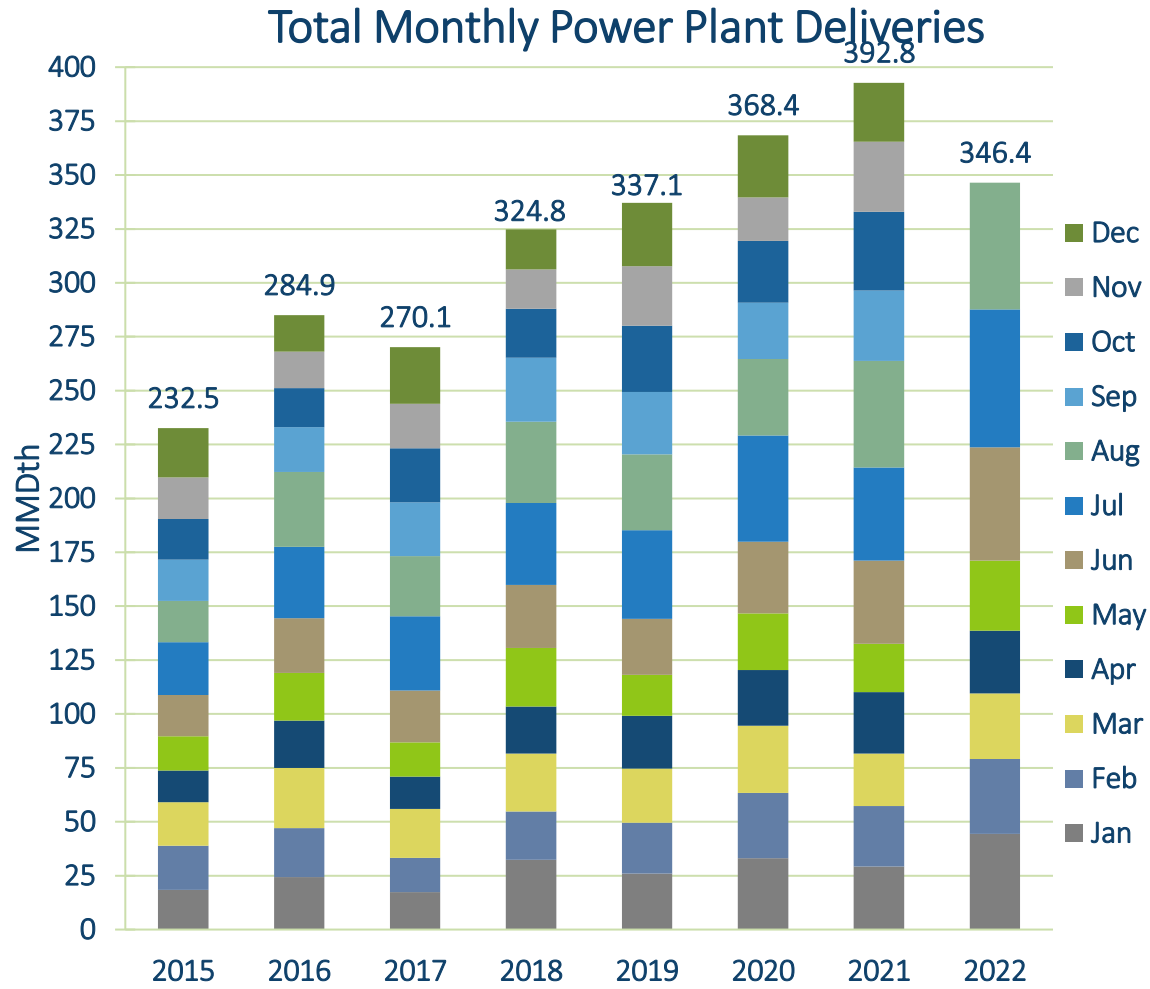
Storage operations

- Storage activity is primarily on injection, but withdrawals are still possible under certain conditions. The possibility of withdrawals will increase as the temperatures decrease and fall approaches.
- ANR will begin its fall storage field shut-ins to set the fields up for withdrawal starting in October. ANR will ensure sufficient withdrawal capacity is maintained to meet firm injection demand.
 - When needed, sufficient withdrawal capacity will be available to meet anticipated demand
- The available capacity will continue to be reflected on the EBB under the operationally available capacity

Operational update

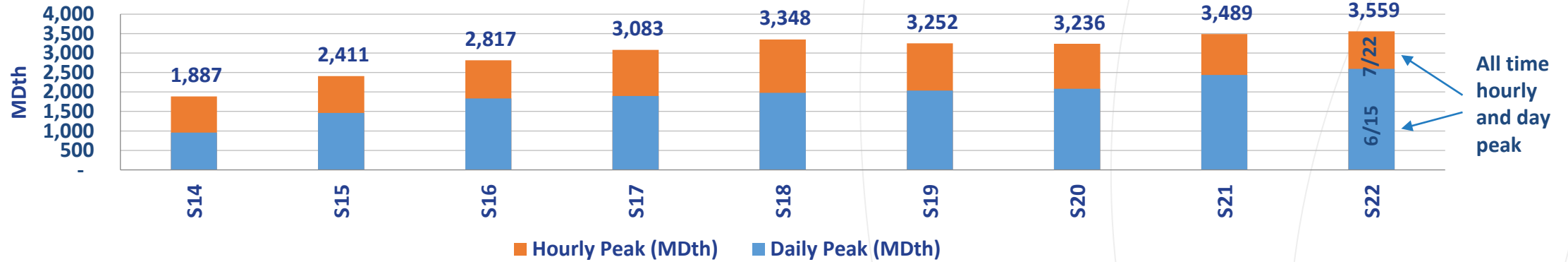
Kevin Pham – Operations Planning

Monthly deliveries to Power Plants

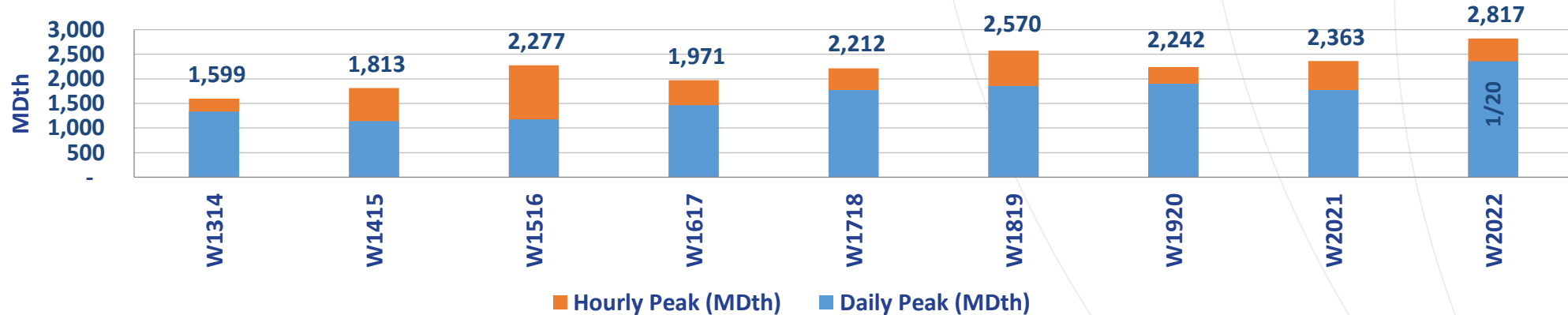


Peak daily & hourly Power Load by season

Peak Daily & Hourly Power Load - Summer (MDth)



Peak Daily & Hourly Power Load - Winter (MDth)



Capacity impacts (SE area)

| | | Cap (MMcf/d) | | September | | | | | | | October | | | | | | | | | | | | | | | | | | | | | | | | | | | | | | | | | | | | | | | | | | | | | | |
|----------------------------------------|-----------------------------------------------------|--------------|---------|-----------|----|----|----|----|----|----|---------|----|----|---|---|---|---|---|---|---|---|---|----|----|----|----|----|----|----|----|----|----|----|----|----|----|----|----|----|----|----|----|----|----|--|--|--|--|--|--|--|--|--|--|--|--|--|
| Dates | Area/Segment/Location | Impact | Avail | | | | | | | | | | | | | | | | | | | | | | | | | | | | | | | | | | | | | | | | | | | | | | | | | | | | | | |
| Southeast Area | | | | 21 | 22 | 23 | 24 | 25 | 26 | 27 | 28 | 29 | 30 | 1 | 2 | 3 | 4 | 5 | 6 | 7 | 8 | 9 | 10 | 11 | 12 | 13 | 14 | 15 | 16 | 17 | 18 | 19 | 20 | 21 | 22 | 23 | 24 | 25 | 26 | 27 | 28 | 29 | 30 | 31 | | | | | | | | | | | | | |
| Stingray Int (LOC #135819) | | | | | | | | | | | | | | | | | | | | | | | | | | | | | | | | | | | | | | | | | | | | | | | | | | | | | | | | | |
| 8/20 - 12/31 | Pipeline - Integrity Issue / Hurricane Laura Damage | N/A | Shut In | | | | | | | | | | | | | | | | | | | | | | | | | | | | | | | | | | | | | | | | | | | | | | | | | | | | | | |
| Multiple Meters - Cameron Area | | | | | | | | | | | | | | | | | | | | | | | | | | | | | | | | | | | | | | | | | | | | | | | | | | | | | | | | | |
| 10/20 - 12/31 | Meter Station - Hurricane Laura Damage | N/A | Shut In | | | | | | | | | | | | | | | | | | | | | | | | | | | | | | | | | | | | | | | | | | | | | | | | | | | | | | |
| Shadyside/TGP Rec (LOC #467239) | | | | | | | | | | | | | | | | | | | | | | | | | | | | | | | | | | | | | | | | | | | | | | | | | | | | | | | | | |
| 1/6 - 12/31 | Meter Equipment Issue | N/A | Shut In | | | | | | | | | | | | | | | | | | | | | | | | | | | | | | | | | | | | | | | | | | | | | | | | | | | | | | |
| Shadyside/TGP Del (LOC #467240) | | | | | | | | | | | | | | | | | | | | | | | | | | | | | | | | | | | | | | | | | | | | | | | | | | | | | | | | | |
| 1/6 - 12/31 | Meter Equipment Issue | N/A | Shut In | | | | | | | | | | | | | | | | | | | | | | | | | | | | | | | | | | | | | | | | | | | | | | | | | | | | | | |



Outage postings

- Service impacts are estimates. Actual nominations, markets, weather and pipeline conditions determine any level of curtailments.
- Projects may be added, altered, delayed or cancelled. Emergent work cannot be planned and will happen from time to time.
- Notice of such planned work, including additions or changes, will be provided via a posting under the Planned Service Outage (PSO) category in GEMS. Emergent work will be posted under the Critical Notice category as soon as possible.



Nominations & Scheduling update

DeAnna Parsell – Noms & Scheduling

DDS Invoice Change



- Prior to August 1, 2022, interruptible Deferred Delivery Service (DDS) charges were calculated using the average daily storage balance as determined at the end of each month
- Effective August 1, 2022 (and subject to refund pending the outcome of the filing in Docket No RP22-501), DDS will be calculated using the ending daily storage balance
- Similar to how IPLS is billed
- You will now see an added column for daily ending balances on the invoice
- Adjustments prior to August 1, 2022, will use the old calculation

ANR customer assistance

Please contact the ANR Noms & Scheduling team for customer assistance, including:

- Scheduling priorities
- Firm service rights and features
- GEMS new user training
- Virtual and face-to-face meetings



TOLL FREE

1-800-827-5267



GROUP EMAIL

[ANR Noms Scheduling
@tcenergy.com](mailto:ANR_Noms_Scheduling@tcenergy.com)



WEBSITE FOR THE ANRPL
TARIFF

ebb.anrpl.com

Questions



| | | |
|------------------------------|-----|------|
| US\$ 0.8 | 0.2 | |
| US\$ 0.7 | 0.3 | |
| US\$ 0.6 | 0.4 | |
| US\$ 0.5 | 0.5 | |
| US\$ 0.4 | 0.6 | |
| US\$ 0.3 | 0.7 | |
| US\$ 0.2 | 0.8 | |
| US\$ 0.1 | 0.9 | |
| US\$ 0.0 | 1.0 | |
| Total Expenditure Equivalent | | 14.2 |