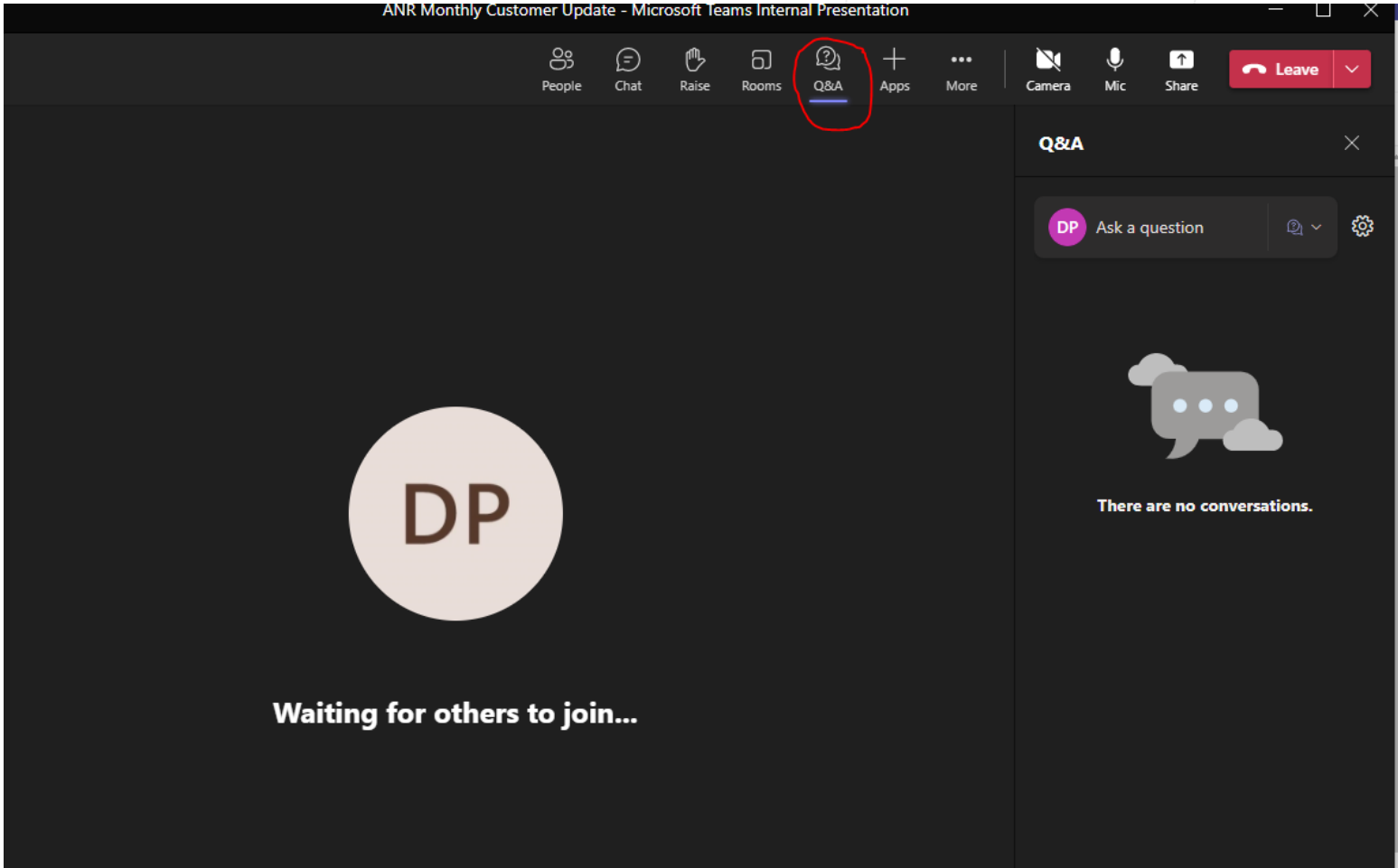


## Welcome to our Microsoft Teams ANR Monthly Customer Update!

- Participants will be in “listen only” mode throughout the presentation
- You do not have to advance the slides, they will be advanced by the facilitator
- Questions will be at the end of the presentation. You can type a question related to the presented material during the presentation or at the end during the Q & A session when announced. Please click on the Q&A icon at the top of the screen to access the chat functionality.
- Thank you for your patience, we will begin shortly!



# Welcome to our Microsoft Teams ANR Monthly Customer Update!



# ANR Monthly Customer Update

JANUARY 2024

JANUARY 25, 2024



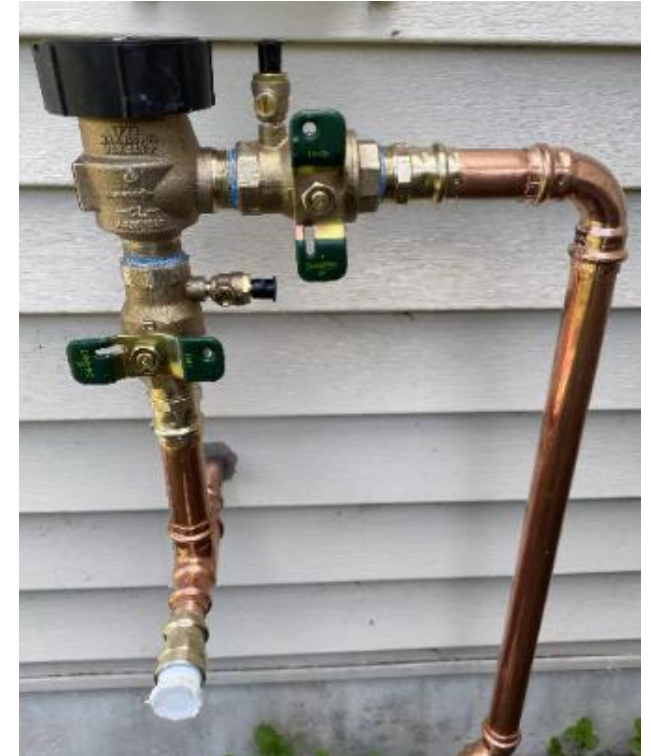
# Agenda



- 1. Safety moment**  
DeAnna Parsell, Noms & Scheduling
- 2. Storage update**  
Eric Tawney, Operations Planning
- 3. Operational update**  
Brett Alner, Operations Planning
- 4. Noms & scheduling update**  
DeAnna Parsell, Noms & Scheduling

## Protect Your Pipes

- Unhook your garden hoses from all outdoor faucets
- Wrap your pipes to protect them from the cold
- Drain your sprinkler system
- Open your cabinet doors and leave faucets dripping



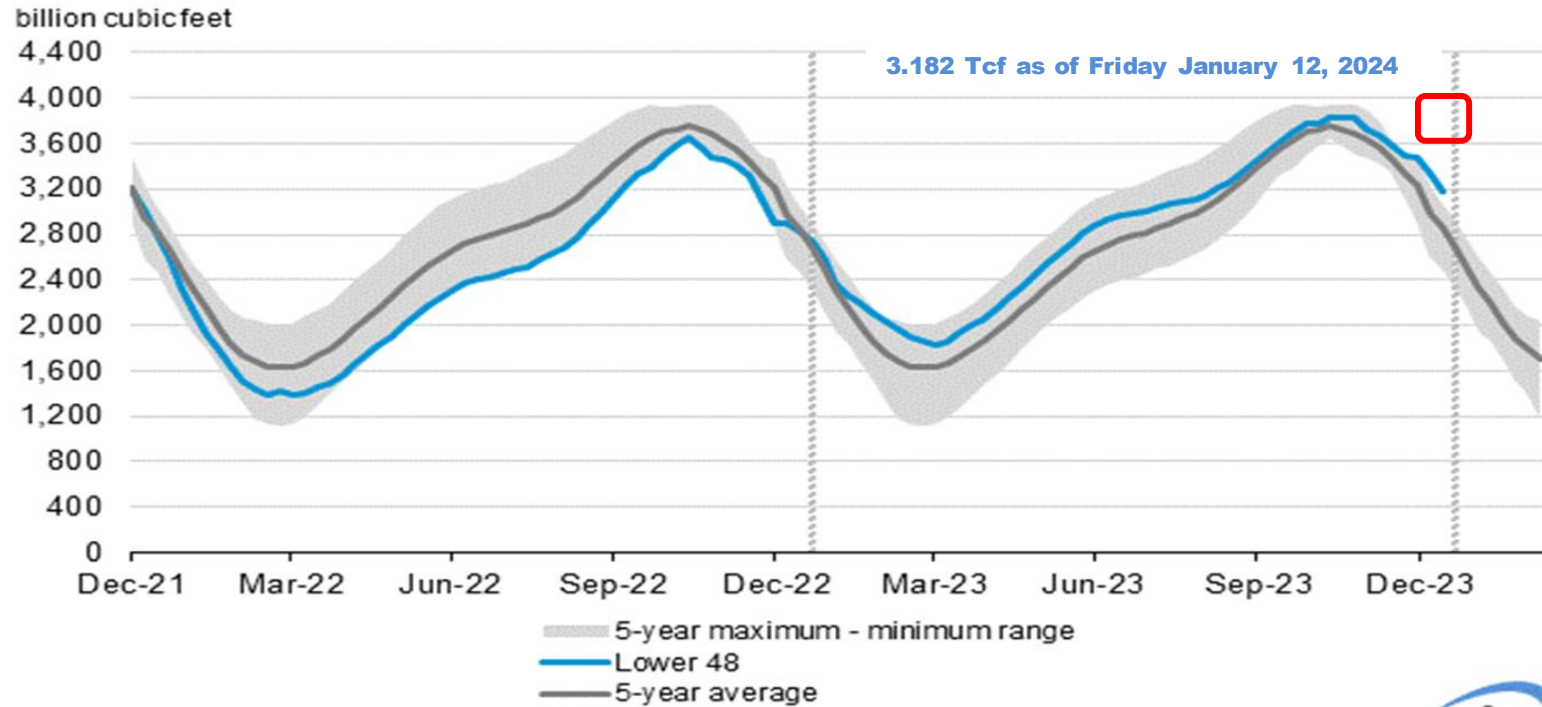
# Storage update

Eric Tawney – Operations Planning

# EIA storage position: The big picture

*Working gas in underground storage compared with the five-year maximum and minimum*

Working gas in underground storage compared with the 5-year maximum and minimum



Data source: U.S. Energy Information Administration



350  
bcf

*more than Jan 2023*

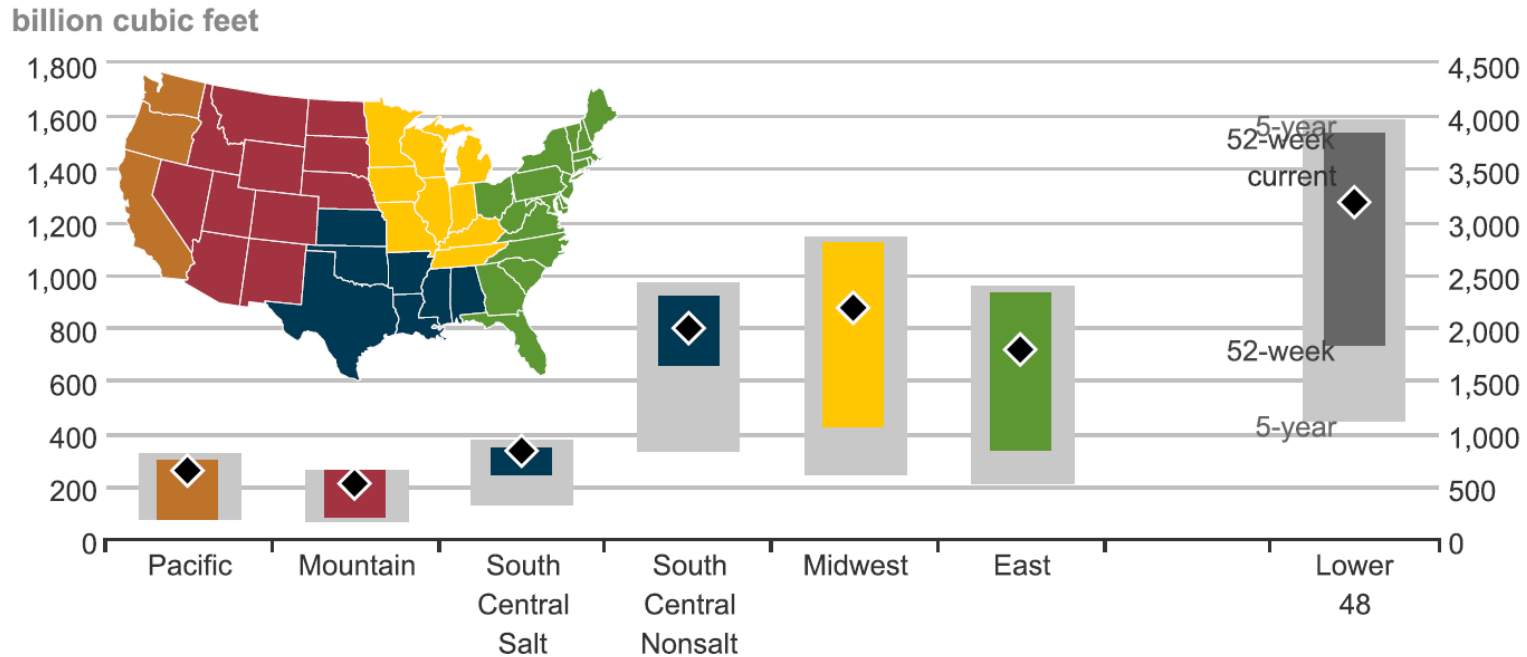
320  
bcf

*above the  
five-year average*



# EIA storage position: The big picture

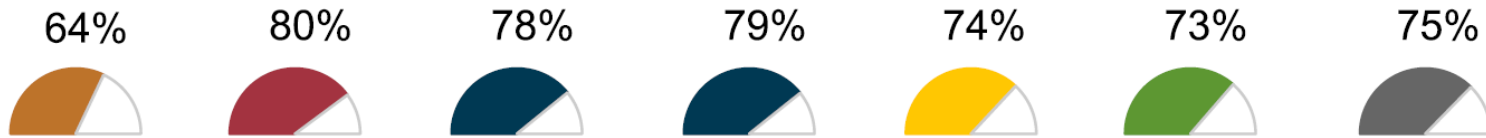
## Underground working natural gas storage summary as of January 12, 2024



**Lower 48**  
 current: 3,182  
 5-year min: 1,107  
 5-year max: 3,958  
 52-week min: 1,830  
 52-week max: 3,836

**Midwest**  
 current: 873  
 5-year min: 240  
 5-year max: 1,139  
 52-week min: 421  
 52-week max: 1,118

## Underground storage capacity utilization



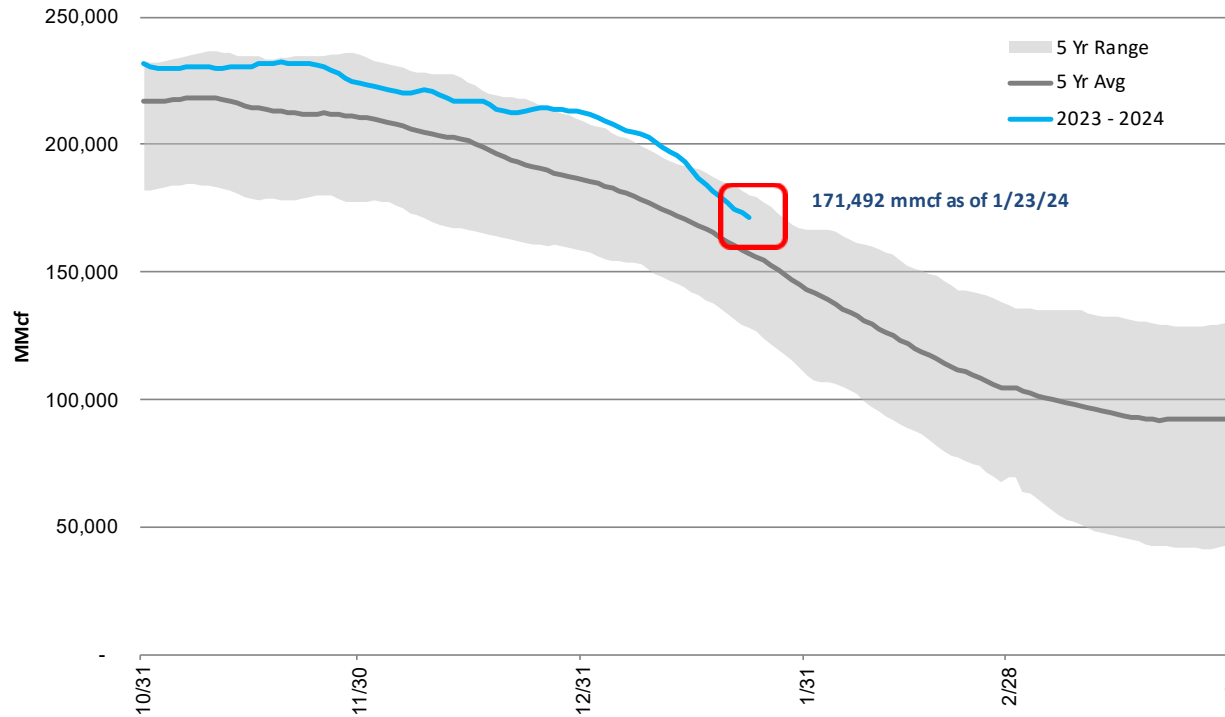
Source: U.S. Energy Information Administration





# Storage position

*Working gas in underground storage compared with the five-year maximum and minimum*



14  
bcf

*more than Jan 2023*

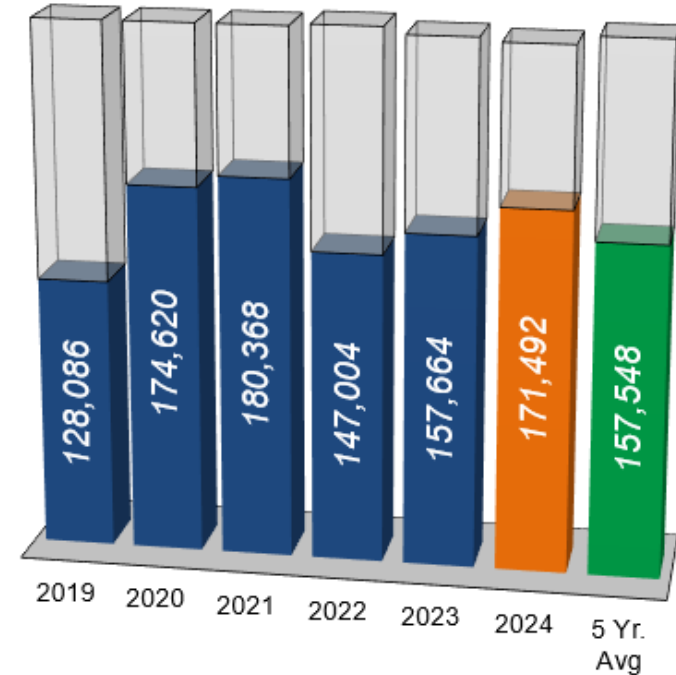
14  
bcf

*more than  
five-year average*



## Storage operations

- From Wednesday, December 11 – Tuesday, January 23 storage activity averaged a withdrawal rate of 1.17-Bcf/d. Daily activity varied from an injection rate of 734-MMcf/d to a withdrawal rate of 3.11-Bcf/d.
- Storage capacity is at 70 percent, roughly midway through the withdrawal season.
- ANR has met all firm customer demand for storage activity.
- There are currently no posted restrictions on storage activity.



**Total Storage is  
70% Full**

## Storage operations

- Storage activity is primarily on withdraw, but injections are still possible. ANR will ensure sufficient withdrawal capacity is maintained to meet firm withdrawal demand.
  - When needed, sufficient injection capacity will be available to meet anticipated demand
- The available capacity will continue to be reflected on the EBB under the operationally available capacity

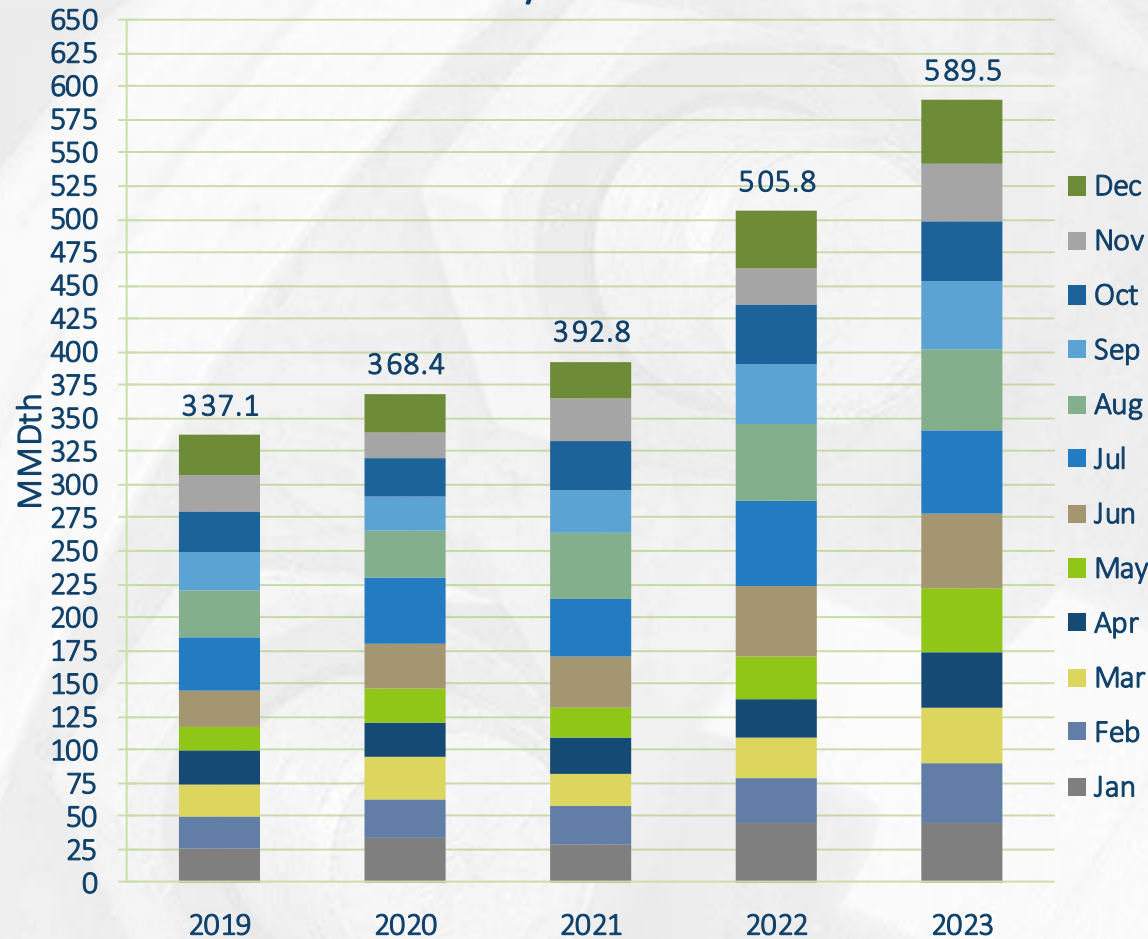


# Operational update

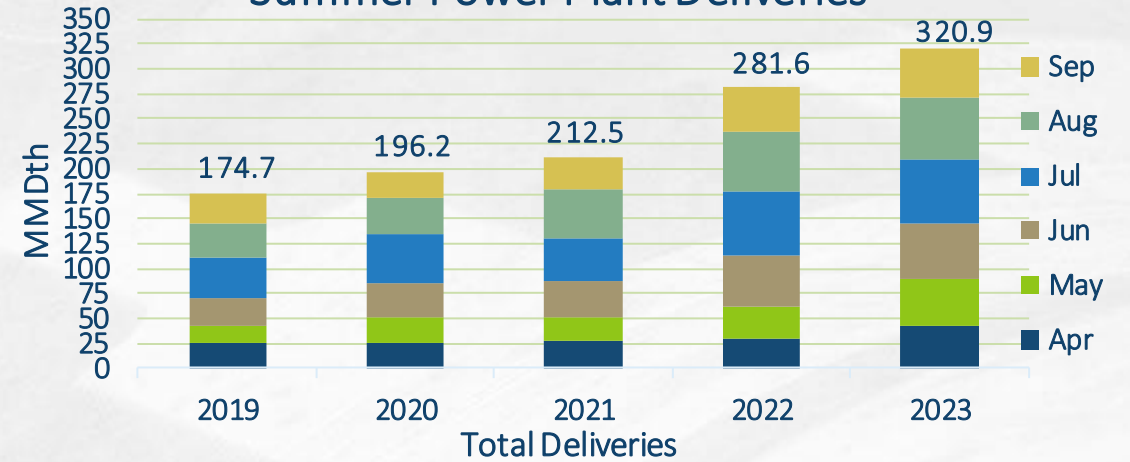
Brett Ainer – Operations Planning

# ANR Monthly Deliveries to Power Plants

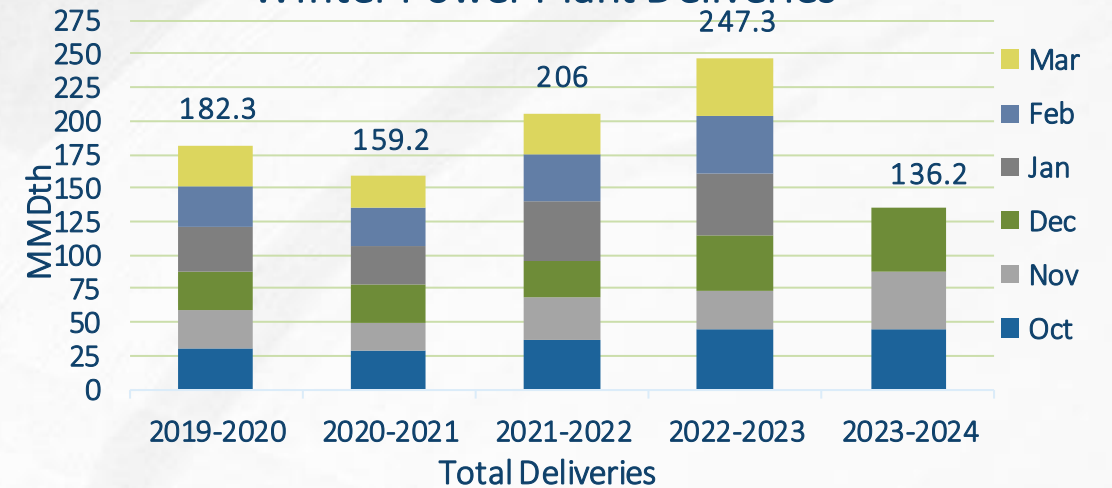
## Total Monthly Power Plant Deliveries



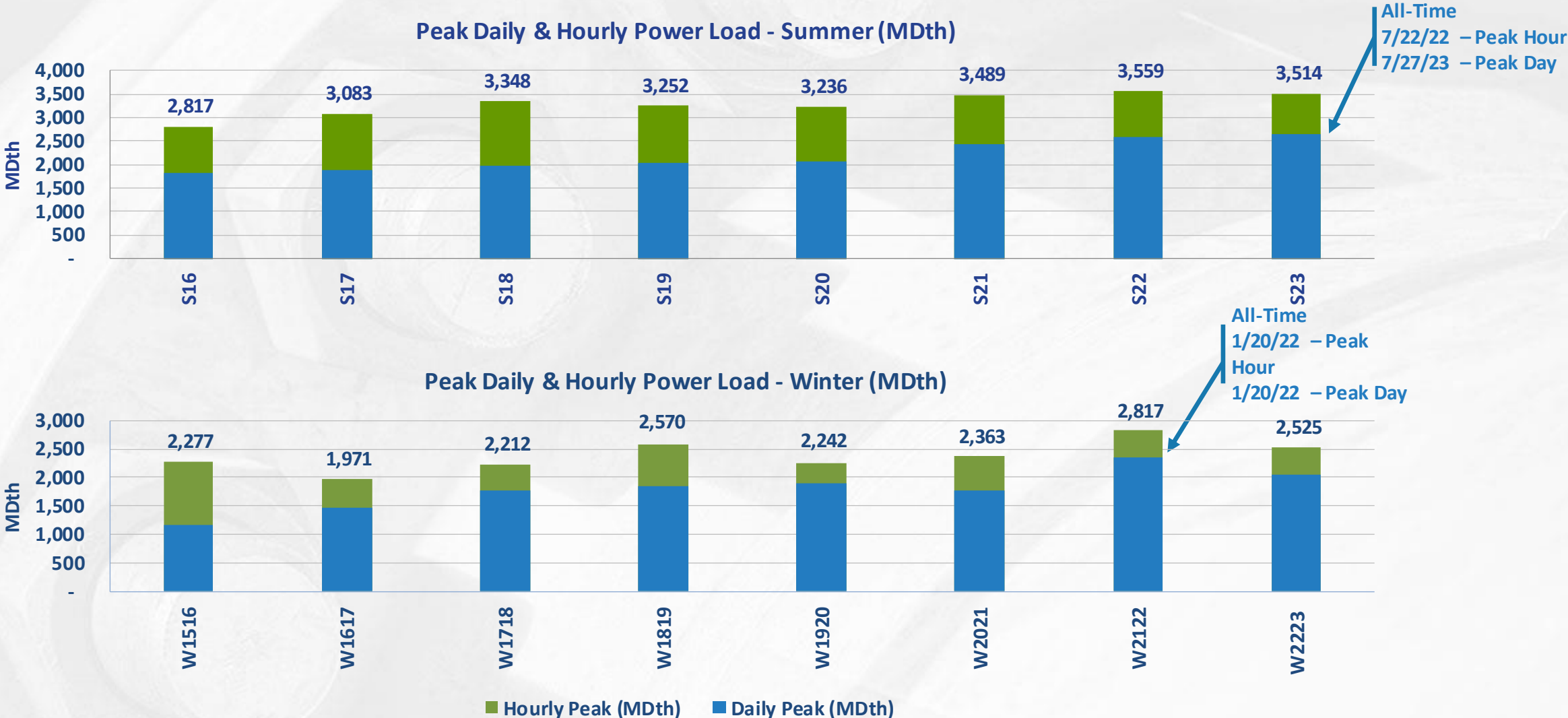
## Summer Power Plant Deliveries



## Winter Power Plant Deliveries



# ANR Peak Daily and Hourly Power Load by Season



# Capacity impacts (SE Mainline & Area)

Dates	Area/Segment/Location	Cap (MMcf/d)		January							February																													
		Impact	Avail	25	26	27	28	29	30	31	1	2	3	4	5	6	7	8	9	10	11	12	13	14	15	16	17	18	19	20	21	22	23	24	25	26	27	28	29	30
<b>Southeast Area &amp; Mainline</b>																																								
<b>Eunice Southbound (LOC #226641)</b>																																								
2/20 - 2/21	Mermentau CS Maintenance	628	450																																					
2/26 - 2/29	0-502 ILI Eunice to Lowry	678	400																																					

Dates	Area/Segment/Location	Cap (MMcf/d)		January							February																														
		Impact	Avail	25	26	27	28	29	30	31	1	2	3	4	5	6	7	8	9	10	11	12	13	14	15	16	17	18	19	20	21	22	23	24	25	26	27	28	29	30	
<b>Southeast Mainline</b>																																									
<b>Evangeline Southbound (LOC #505591)</b>																																									
2/6 - 2/7	Turkey Creek CS ESD	120	1217																																						
<b>Delhi Southbound (LOC #1379345)</b>																																									
2/26 - 2/29	ANR 2-501 MP 194.1 to MP 264.9 (N. of Greenville)	230	1022																																						
<b>Cottage Grove Southbound (LOC #505614)</b>																																									
1/25 - 1/29	ILI - Madisonville to Cottage Grove, Cottage Grove unit 608 maintenance	260	1017																																						
1/30 - 2/29	Cottage Grove unit 608 maintenance	140	1137																																						
<b>Defiance Southbound (LOC #226637)</b>																																									
1/1 - 1/31	Portland Compressor Station maintenance	200	913																																						



# Outage postings

- Service impacts are estimates. Actual nominations, markets, weather and pipeline conditions determine any level of curtailments.
- Projects may be added, altered, delayed or cancelled. Emergent work cannot be planned and will happen from time to time.
- Notice of such planned work, including additions or changes, will be provided via a posting under the Planned Service Outage (PSO) category in GEMS. Emergent work will be posted under the Critical Notice category as soon as possible.





# Nominations & Scheduling update

DeAnna Parsell – Noms & Scheduling

# ITS-3 and FTS-3 Late Nom Request

**TC Energy** ITS-3 and FTS-3 Late Nom Request  
This form is only for ITS-3 and FTS-3 with 2 hour start-up

ENTITY NAME:   
CONTRACT #:   
GAS DAY:   
CONTACT NAME:   
PHONE NUMBER:   
RECEIPT:   
DELIVERY:   
NOM ID:

DELIVERY QTY (DTH):	9:00 AM	10:00 AM	11:00 AM	12:00 PM	1:00 PM	2:00 PM	3:00 PM	4:00 PM	5:00 PM	6:00 PM	7:00 PM	8:00 PM	9:00 PM	10:00 PM	11:00 PM	12:00 AM	1:00 AM	2:00 AM	3:00 AM	4:00 AM	5:00 AM	6:00 AM	7:00 AM	8:00 AM	
	<input type="text"/>	<input type="text"/>	<input type="text"/>	<input type="text"/>	<input type="text"/>	<input type="text"/>	<input type="text"/>	<input type="text"/>	<input type="text"/>	<input type="text"/>	<input type="text"/>	<input type="text"/>	<input type="text"/>	<input type="text"/>	<input type="text"/>	<input type="text"/>	<input type="text"/>	<input type="text"/>	<input type="text"/>	<input type="text"/>	<input type="text"/>	<input type="text"/>	<input type="text"/>	<input type="text"/>	<input type="text"/>

TOTAL:

This form is a request and not a guarantee ANR will schedule gas. If ANR is unable to schedule this request, the shipper is responsible for any imbalance or penalties incurred.

This request is not a substitute for a burn sheet.

[CLICK TO EMAIL FORM](#)

If this form cannot be opened in PDF, please print, fill out and email to:  
laurea\_gindrom@tcenergy.com  
aer\_nom\_scheduling@tcenergy.com  
apw\_power\_desk@tcenergy.com

- Should have a receipt point from a storage facility (ANRPL or 3<sup>rd</sup> party) to ensure simultaneous flow
- Must have the two-hour start-up and shut-down option
- Must submit form before 9 a.m. CST before the current gas day ends
- Retro requests for nominations that were not in place using ITS-3/FTS-3 services are not permitted

## ANR customer assistance

Please contact the ANR Noms & Scheduling team for customer assistance, including:

- Scheduling priorities
- Firm service rights and features
- GEMS new user training
- Virtual and face-to-face meetings



TOLL FREE

1-800-827-5267



GROUP EMAIL

[ANR\\_Noms\\_Scheduling@tcenergy.com](mailto:ANR_Noms_Scheduling@tcenergy.com)

[CustomerServiceWest@tcenergy.com](mailto:CustomerServiceWest@tcenergy.com)



WEBSITE FOR THE ANRPL  
TARIFF

[ebb.anrpl.com](http://ebb.anrpl.com)

Questions



US\$ 0.8	0.2
US\$ 0.7	0.3
US\$ 0.6	0.4
US\$ 0.5	0.5
US\$ 0.4	0.6
US\$ 0.3	0.7
US\$ 0.2	0.8
US\$ 0.1	0.9
US\$ 0.0	1.0
Total Capital Expenditure	
	14.2