

Welcome to our ANR Monthly Customer Update!

- Participants will be in “listen only” mode throughout the presentation
- You do not have to advance the slides, they will be advanced by the facilitator
- Questions will be at the end of the presentation. You can type a question related to the presented material during the presentation or at the end during the Q & A session when announced. Please click on the Q&A icon at the top of the screen to access the chat functionality.
- Thank you for your patience, we will begin shortly!



ANR Monthly Customer Update

AUGUST 21, 2024

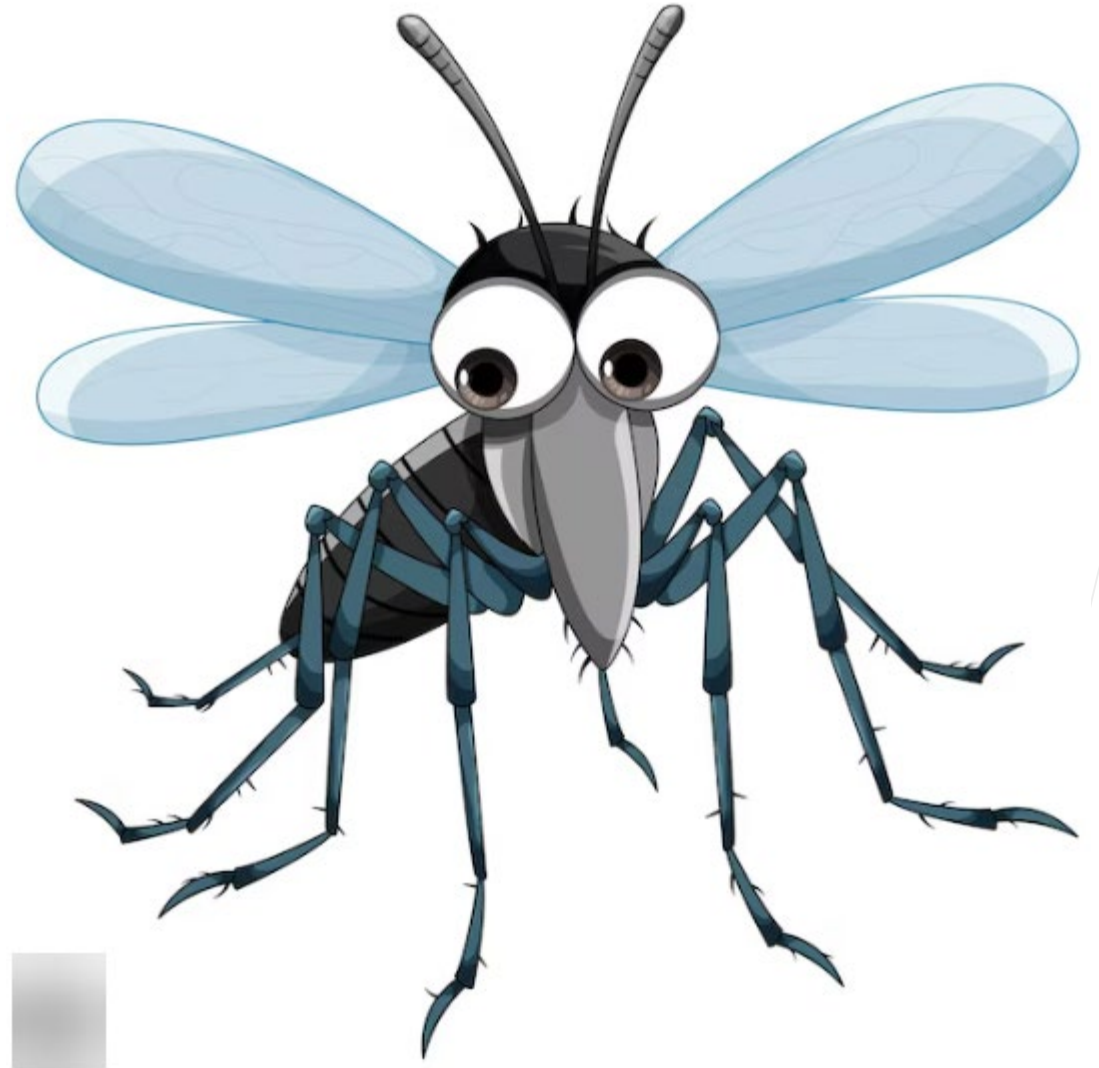
Agenda



- 1. Safety moment**
Dana Coates, Noms & Scheduling
- 2. Storage update**
Eric Tawney, Operations Planning
- 3. Operational update**
Max Jarvie, Operations Planning
- 4. Noms & Scheduling update**
Dana Coates, Noms & Scheduling

Safety moment: Avoid Bug Bites

- Use insect repellent
- Cover skin surfaces by wearing long sleeves and pants
- Avoid being outside at night when mosquitos are most prevalent
- Avoid areas with overgrown plants or tall grass
- Avoid standing water



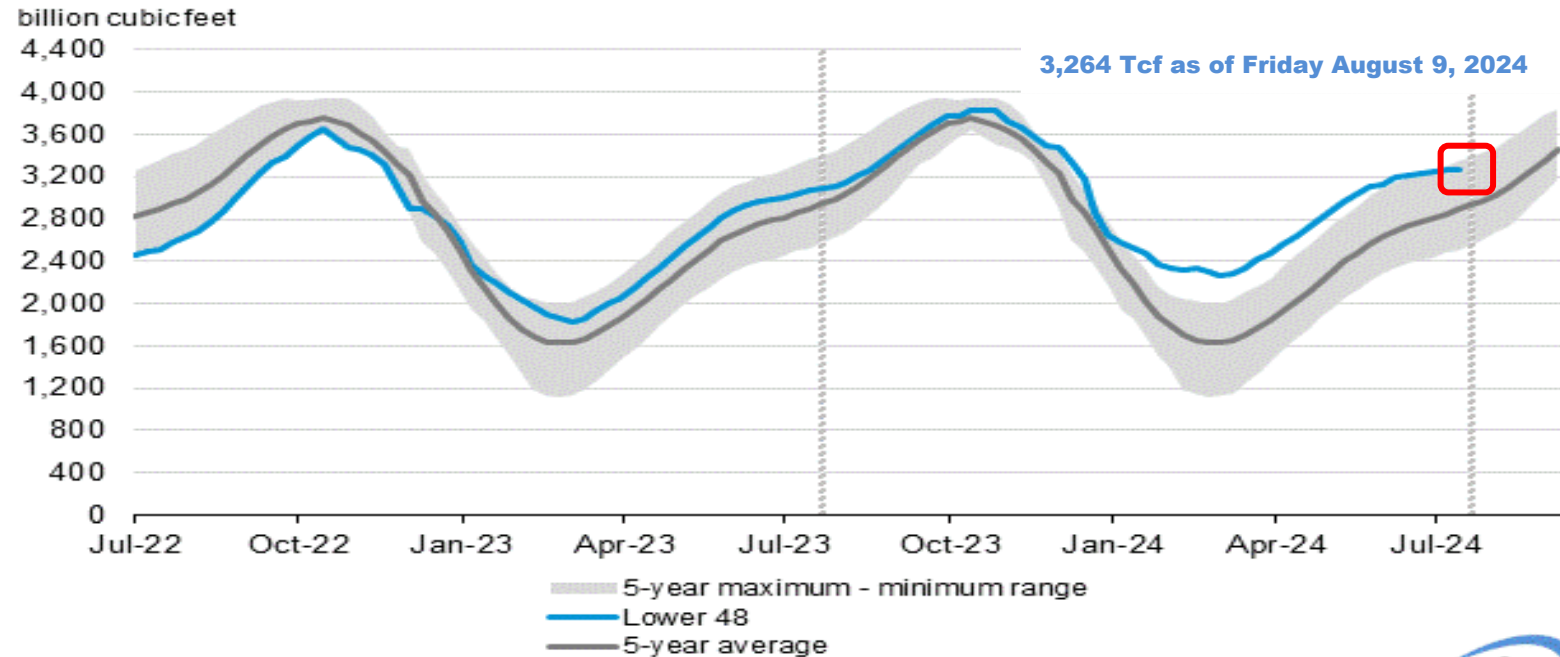
Storage update

Eric Tawney – Operations Planning

EIA storage position: The big picture

Working gas in underground storage compared with the five-year maximum and minimum

Working gas in underground storage compared with the 5-year maximum and minimum



Data source: U.S. Energy Information Administration

Note: The shaded area indicates the range between the historical minimum and maximum values for the weekly series from 2019 through 2023. The dashed vertical lines indicate current and year-ago weekly periods.



209
bcf

more than August 2023

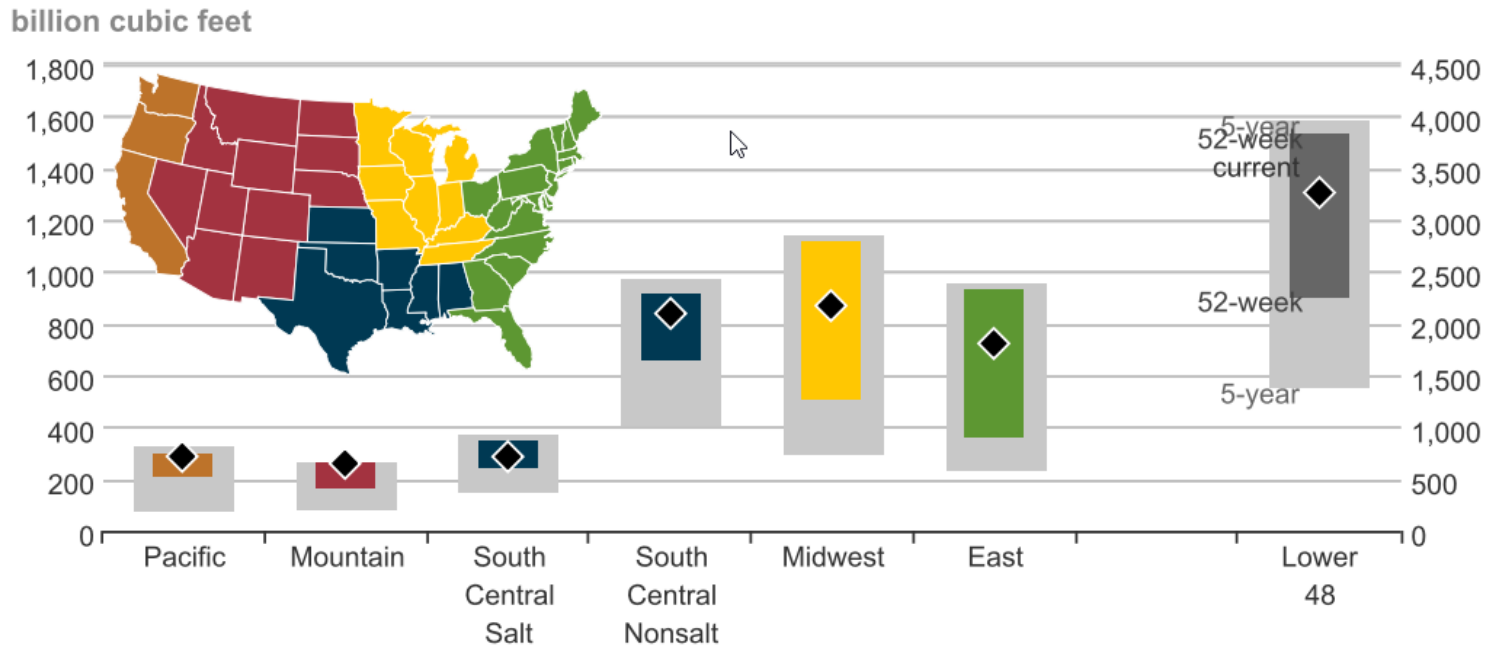
375
bcf

*above the
five-year average*



EIA storage position: The big picture

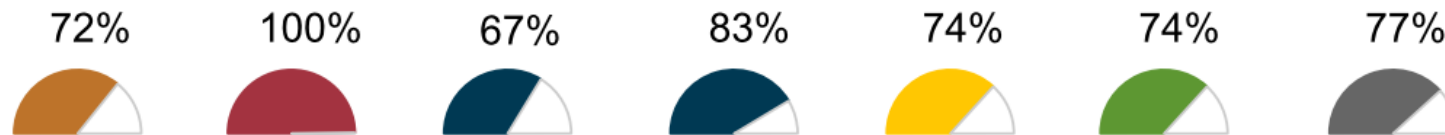
Underground working natural gas storage summary as of August 9, 2024



Lower 48
 current: 3,264
 5-year min: 1,382
 5-year max: 3,958
 52-week min: 2,259
 52-week max: 3,836

Midwest
 current: 869
 5-year min: 293
 5-year max: 1,139
 52-week min: 510
 52-week max: 1,118

Underground storage capacity utilization

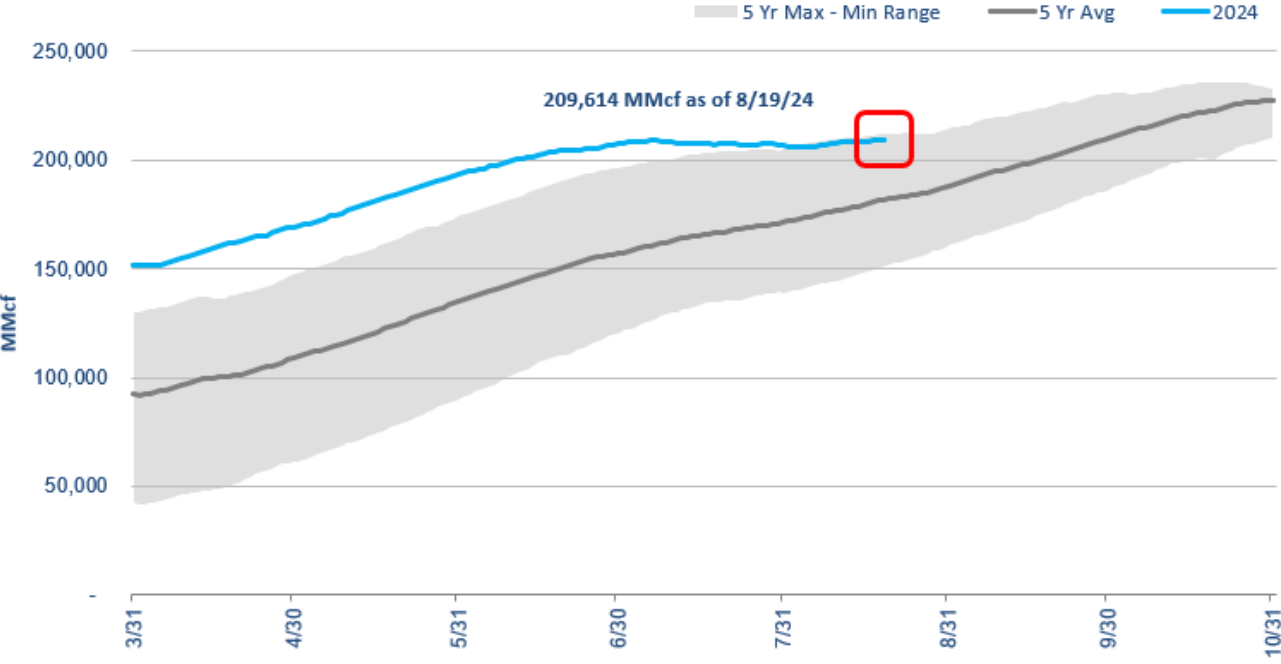


Source: U.S. Energy Information Administration



Storage position

Working gas in underground storage compared with the five-year maximum and minimum



8
bcf

more than August 2023

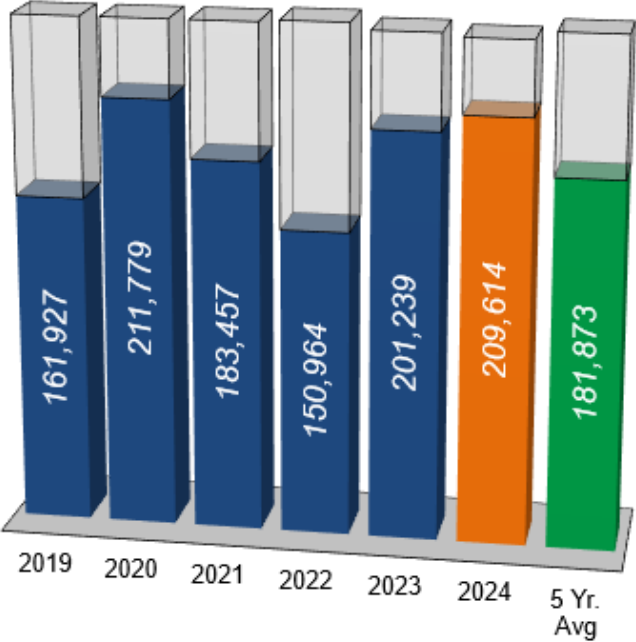
28
bcf

*more than
five-year average*



Storage operations

- From Tuesday, July 16 – Monday, August 19 storage activity averaged an injection rate of 57-MMcf/d. Daily activity varied from an injection rate of 550-MMcf/d to a withdrawal rate of 544-MMcf/d.
- Storage capacity is at 85 percent, roughly midway through the injection season.
- ANR has met all firm customer demand for storage activity.
- There is currently one posted restriction on storage activity. DDS and MBS account inventory levels need to be reduced to zero by September 1st. ANR will monitor storage level inventories and update this restriction, as necessary.



**Total Storage is
85% Full**



Storage operations

- Storage activity is primarily on injection, but withdrawals are still possible. ANR will ensure sufficient injection capacity is maintained to meet firm injection demand.
 - When needed, sufficient withdrawal capacity will be available to meet anticipated demand
- The available capacity will continue to be reflected on the EBB under the operationally available capacity

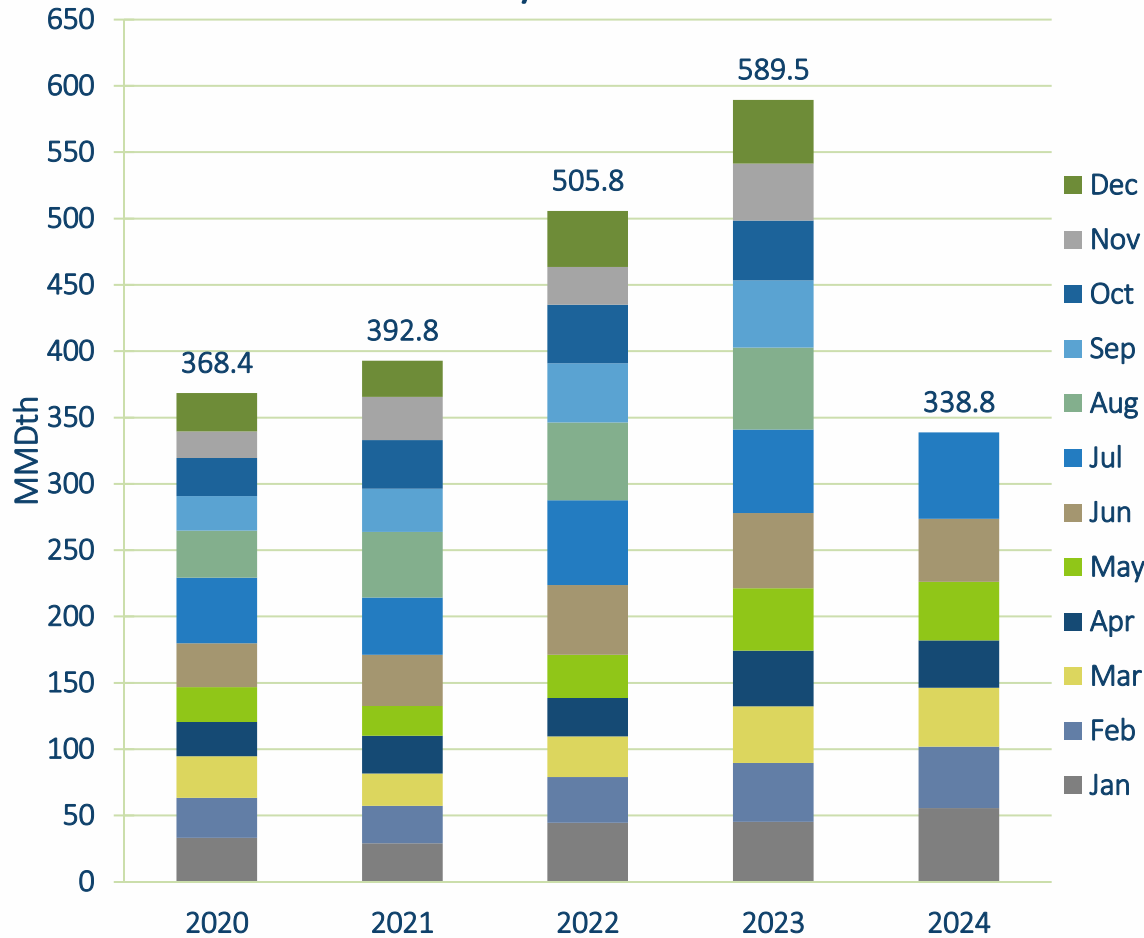


Operational update

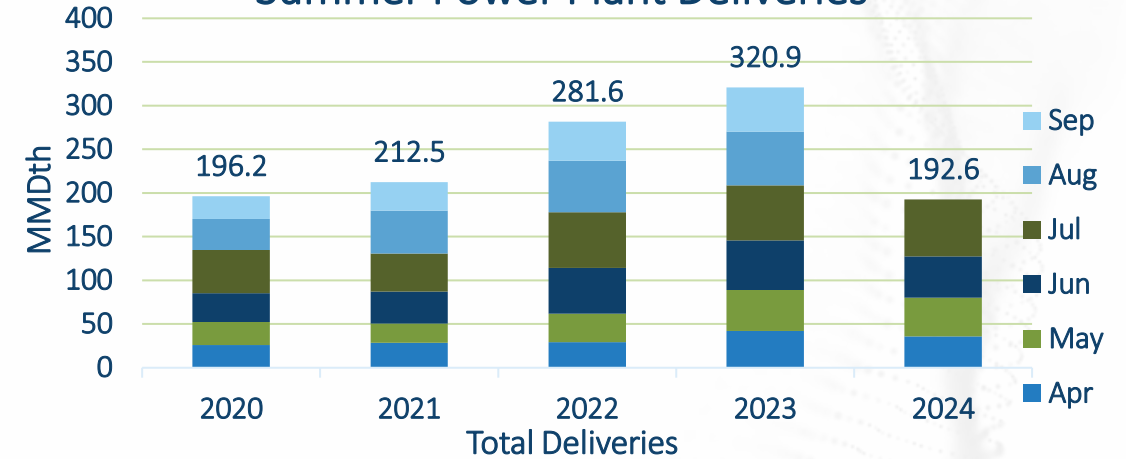
Max Jarvie – Operations Planning

ANR Monthly Deliveries to Power Plants

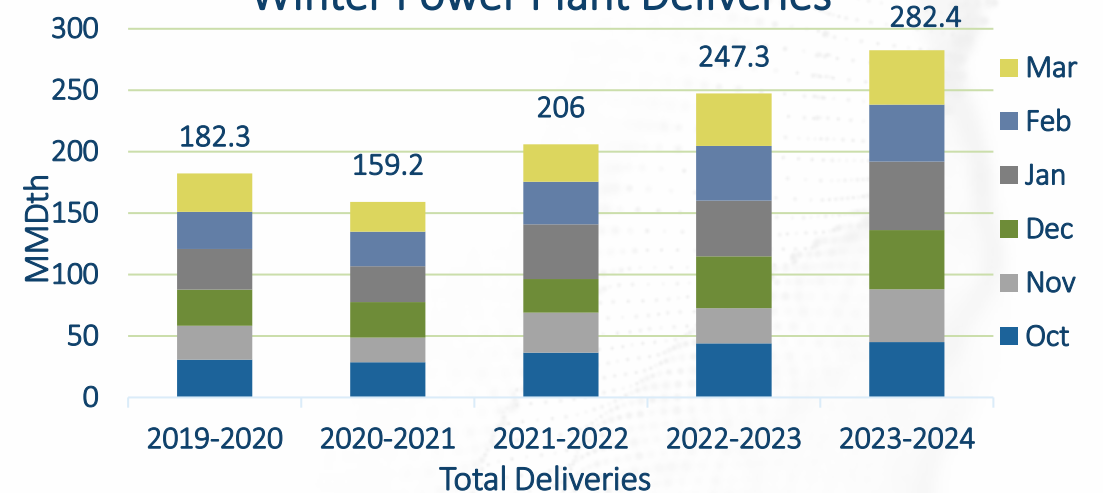
Total Monthly Power Plant Deliveries



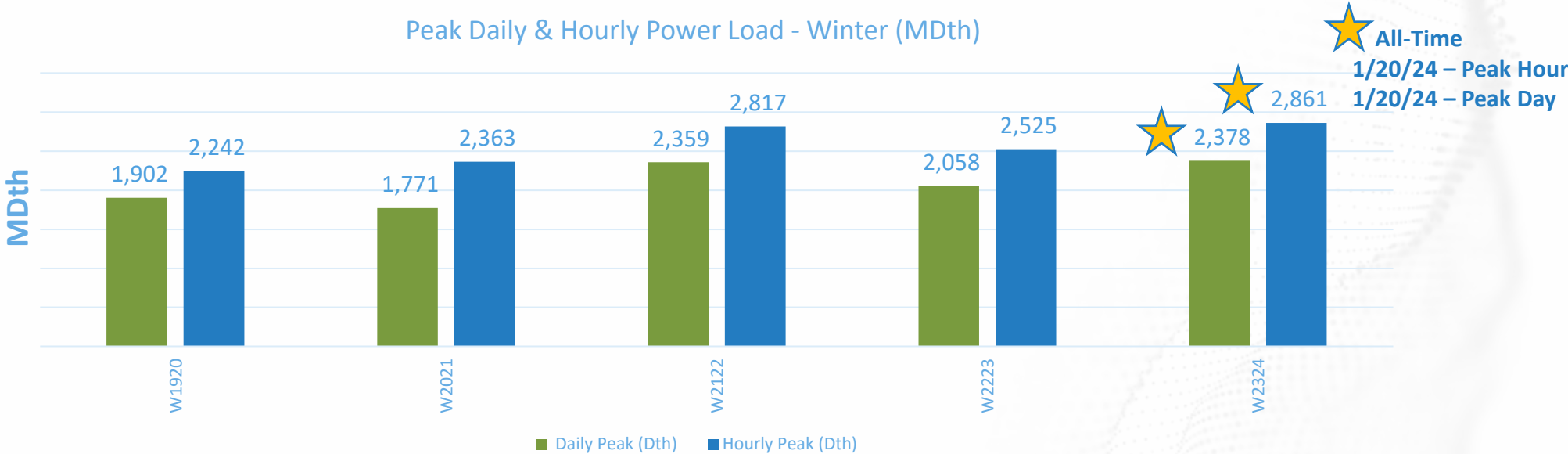
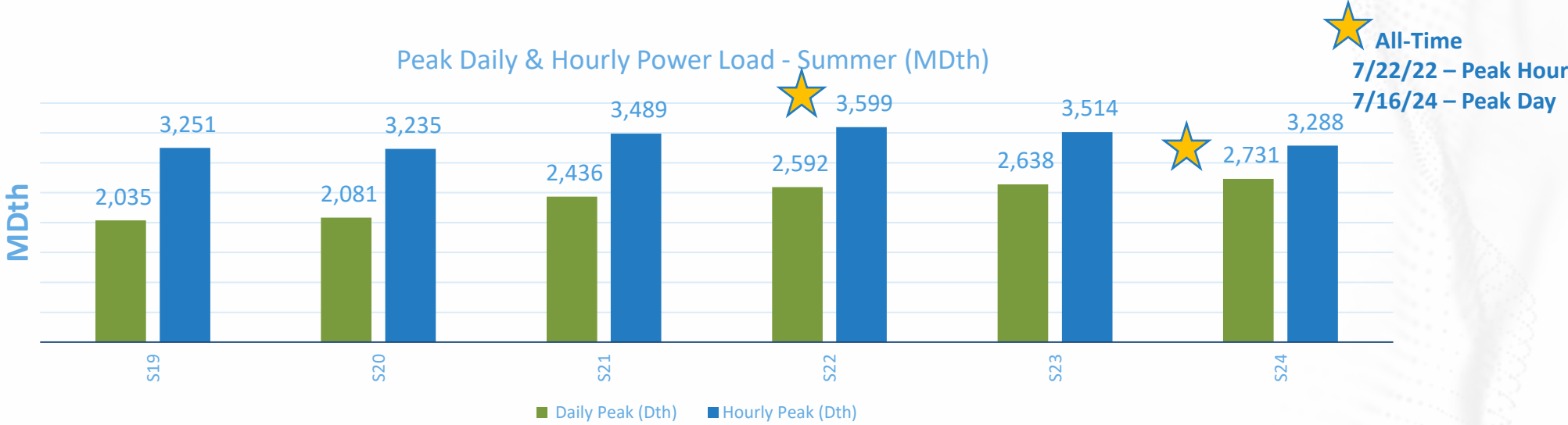
Summer Power Plant Deliveries



Winter Power Plant Deliveries



ANR Peak Daily and Hourly Power Load by Season



Capacity impacts (SW/SE Mainline & Market Area)

Dates		Area/Segment/Location		Cap (MMcf/d)		August														September																									
				Impact	Avail	18	19	20	21	22	23	24	25	26	27	28	29	30	31	1	2	3	4	5	6	7	8	9	10	11	12	13	14	15	16	17	18	19	20	21	22	23	24	25	26
Southwest Area & Mainline																																													
SWML Northbound (LOC # 226630)																																													
8/19 - 8/23	Integrity Dig ANR 0-100 MLV 17-19, 22-24, Birmingham ESD, ILI ANR 2-100 Lineville to MP573.80, ANR 0-100 Pipeline Maintenance MLV 29 - 30		256	450																																									
8/24 - 8/31	Integrity Dig ANR 0-100 MLV 17-19, 22-24, ANR 0-100 Pipeline Maintenance MLV 29-30 and 36-37		169	537																																									
9/1 - 9/8	ANR 0-100 Integrity Dig MP144.21 and MP142.85, ANR 1-100 Integrity Dig MP429.19, ANR 0-100 Pipeline Maintenance MLV 29-30 and 36-37		71	635																																									
9/9 - 9/21	ANR 0-100 Pipeline Maintenance MLV 29-30 and 36-37, Integrity Dig ANR 0-100 MP142.85		65	641																																									
9/22 - 9/28	ANR 0-100 Pipeline Maintenance MLV 29 - 30		36	670																																									

Dates		Area/Segment/Location		Cap (MMcf/d)		August														September																									
				Impact	Avail	18	19	20	21	22	23	24	25	26	27	28	29	30	31	1	2	3	4	5	6	7	8	9	10	11	12	13	14	15	16	17	18	19	20	21	22	23	24	25	26
Market Area & Storage																																													
Bridgman Northbound (LOC #226632)																																													
9/17-9/28	Integrity dig 1-100 MP932.19		850	772																																									



Capacity impacts (SE Mainline & Area)

Dates	Area/Segment/Location	Cap (MMcf/d)		August																												September																													
		Impact	Avail	18	19	20	21	22	23	24	25	26	27	28	29	30	31	1	2	3	4	5	6	7	8	9	10	11	12	13	14	15	16	17	18	19	20	21	22	23	24	25	26	27	28	29	30														
Southeast Area & Mainline																																																													
Defiance Westbound (LOC #505605)																																																													
8/13 - 8/31	Shelbyville CS units #1 & #8	50	839	[Red]																																																									

Dates	Area/Segment/Location	Cap (MMcf/d)		August																												September																													
		Impact	Avail	18	19	20	21	22	23	24	25	26	27	28	29	30	31	1	2	3	4	5	6	7	8	9	10	11	12	13	14	15	16	17	18	19	20	21	22	23	24	25	26	27	28	29	30														
Southeast Mainline																																																													
Jena Southbound (LOC #9505489)																																																													
TBD (1 day)	Jena Compressor Station Maintenance	207	1100																													[Red] TBD																													
Delhi Southbound (LOC #1379345)																																																													
8/20 - 8/26	1-501 S.Side Mississippi River to Delhi CS	190	1024	[Red]																																																									
Cottage Grove Southbound (LOC #505614)																																																													
8/20 - 8/31	Integrity Digs 1-501 MP564.91, 1-501 MP635.54	382	850	[Red]																																																									
8/28 - 8/29	Celestine CS unit 10 Inspection/Maintenance	158	1074	[Red]																																																									
9/3 - 9/13	ILI 1-501 Cottage Grove to Brownsville, ILI 1-501 Celestine to Ohio River	270	1007																													[Red]																													
9/16 - 9/20	ILI 0-501 Celestine to Ohio River	270	1007																													[Red]																													
TBD (1 day)	Madisonville Unit 9 Insp/Main 4K	183	1094																													[Red] TBD																													
Shelbyville Southbound (LOC #9505527)																																																													
9/24 - 9/28	1-501 Portland to Shelbyville ILI	375	666																													[Red]																													
Defiance Southbound (LOC #226637)																																																													
9/24 - 9/28	1-501 Portland to Shelbyville ILI	220	669																													[Red]																													



Outage postings

- Service impacts are estimates. Actual nominations, markets, weather and pipeline conditions determine any level of curtailments.
- Projects may be added, altered, delayed or cancelled. Emergent work cannot be planned and will happen from time to time.
- Notice of such planned work, including additions or changes, will be provided via a posting under the Planned Service Outage (PSO) category in GEMS. Emergent work will be posted under the Critical Notice category as soon as possible.



Nominations & Scheduling update

Dana Coates – Noms & Scheduling

Nomination Reminders

- As of August 19th, Northern Border and ANR locations: Will County, Young's Road and Des Plaines have moved to EDI for confirmations. All Duns and Contract numbers need to match between ANR and Northern Border.
- An alternative to submitting nominations individually on GEMS is to use the batch nom files.
 - Upload all nominations through a CSV file directly into GEMS
 - Add, change or zero out PMK and regular nominations
 - Batch file layout and directions for loading are posted on www.ANRPL.com under Quick Links → Forms → Nomination Resources.
- Please reach out to your customer service representative if you have any questions or would like more information about EDI or Batch files.



ANR customer assistance

Please contact the ANR Noms & Scheduling team for customer assistance, including:

- Scheduling priorities
- Firm service rights and features
- GEMS new user training
- Virtual and face-to-face meetings



TOLL FREE

1-800-827-5267



GROUP EMAIL

ANR_Noms_Scheduling@tcenergy.com

CustomerServiceWest@tcenergy.com



WEBSITE FOR THE ANRPL
TARIFF

ebb.anrpl.com

