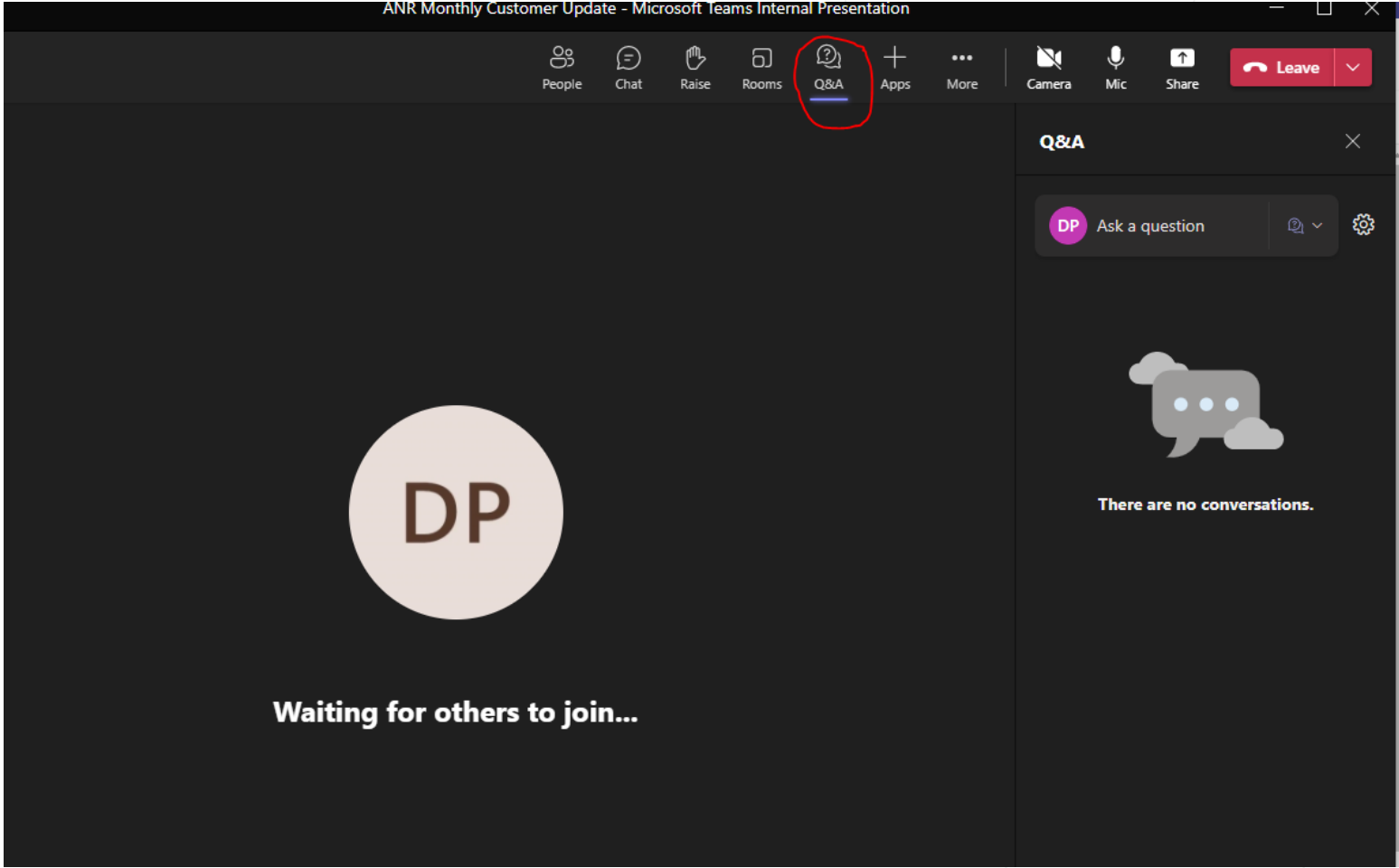


## Welcome to our Microsoft Teams ANR Monthly Customer Update!

- Participants will be in “listen only” mode throughout the presentation
- You do not have to advance the slides, they will be advanced by the facilitator
- Questions will be at the end of the presentation. You can type a question related to the presented material during the presentation or at the end during the Q & A session when announced. Please click on the Q&A icon at the top of the screen to access the chat functionality.
- Thank you for your patience, we will begin shortly!



# Welcome to our Microsoft Teams ANR Monthly Customer Update!



# ANR Monthly Customer Update

JULY 2023

JULY 27, 2023

# Agenda



- 1. Safety moment and TC Energy update**  
DeAnna Parsell, Noms & Scheduling
- 2. Storage update**  
Brett Alner, Operations Planning
- 3. Operational update**  
Brett Alner, Operations Planning
- 4. Noms & scheduling update**  
DeAnna Parsell, Noms & Scheduling

# Safety moment

## The 4 injuries doctors see most in the summer


Warm weather and longer days will bring many people outdoors for cookouts, water sports and more.

But did you know warm weather also leads to **more** trips to urgent care or even the emergency room?



**Swimming injuries & drowning**

- Don't swim after eating
- Don't swim under the influence
- Enter the water feet first



**Food poisoning**

- Don't leave food out in the heat
- Properly wash produce
- Wash hands before cooking or eating



**Sun burns**

- Wear sunscreen (SPF < 30)
- Wear protective clothing
- Sit in the shade



**Heat-related illness**

- Wear sunscreen (SPF < 30)
- Avoid being outside for too long
- Stay hydrated



**Avoiding complacency is the key to summertime safety!**





“All participants in the energy value chain legitimately want to reduce emissions and be part of the solution.”

FRANÇOIS POIRIER, TC ENERGY'S PRESIDENT AND CHIEF EXECUTIVE OFFICER

# Storage update

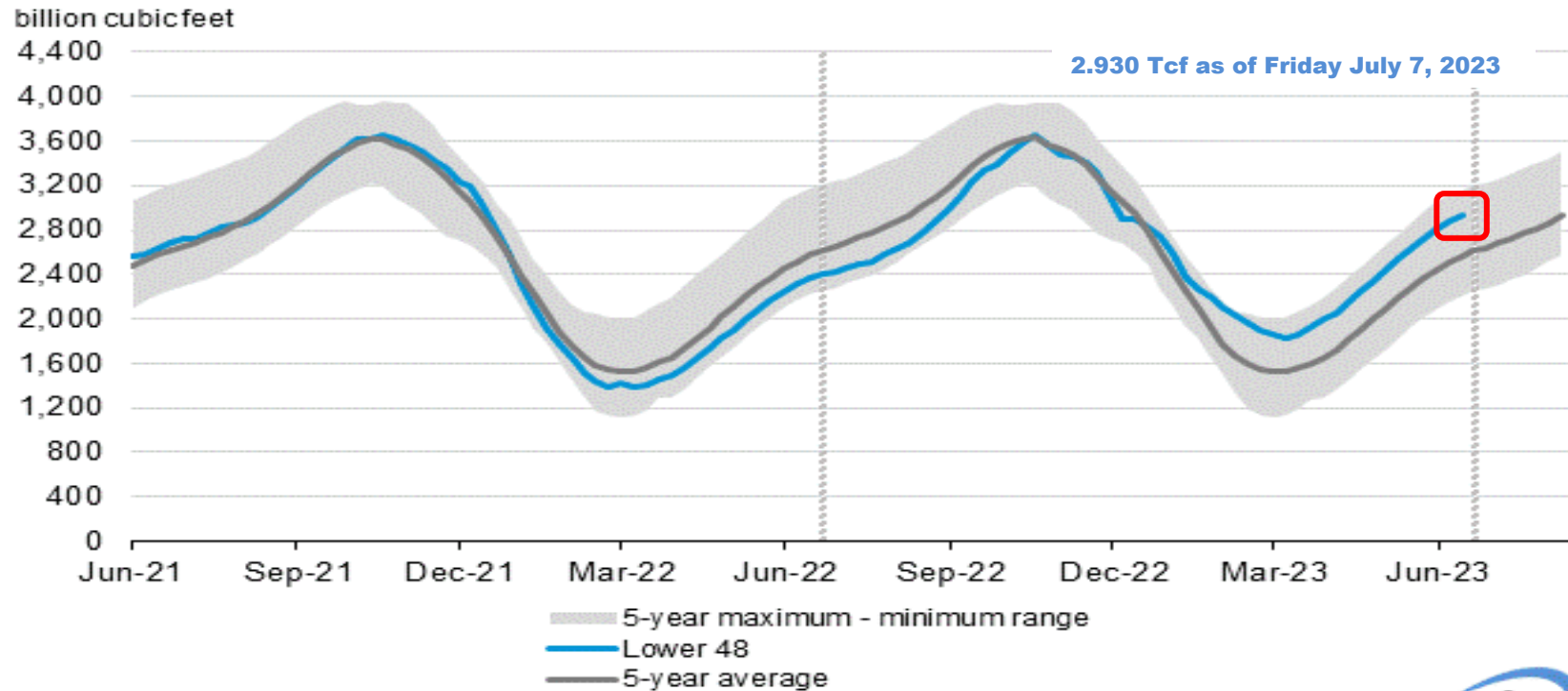
Brett Aler – Operations Planning



# EIA storage position: The big picture

*Working gas in underground storage compared with the five-year maximum and minimum*

Working gas in underground storage compared with the 5-year maximum and minimum



Data source: U.S. Energy Information Administration



569  
bcf

*more than July 2022*

364  
bcf

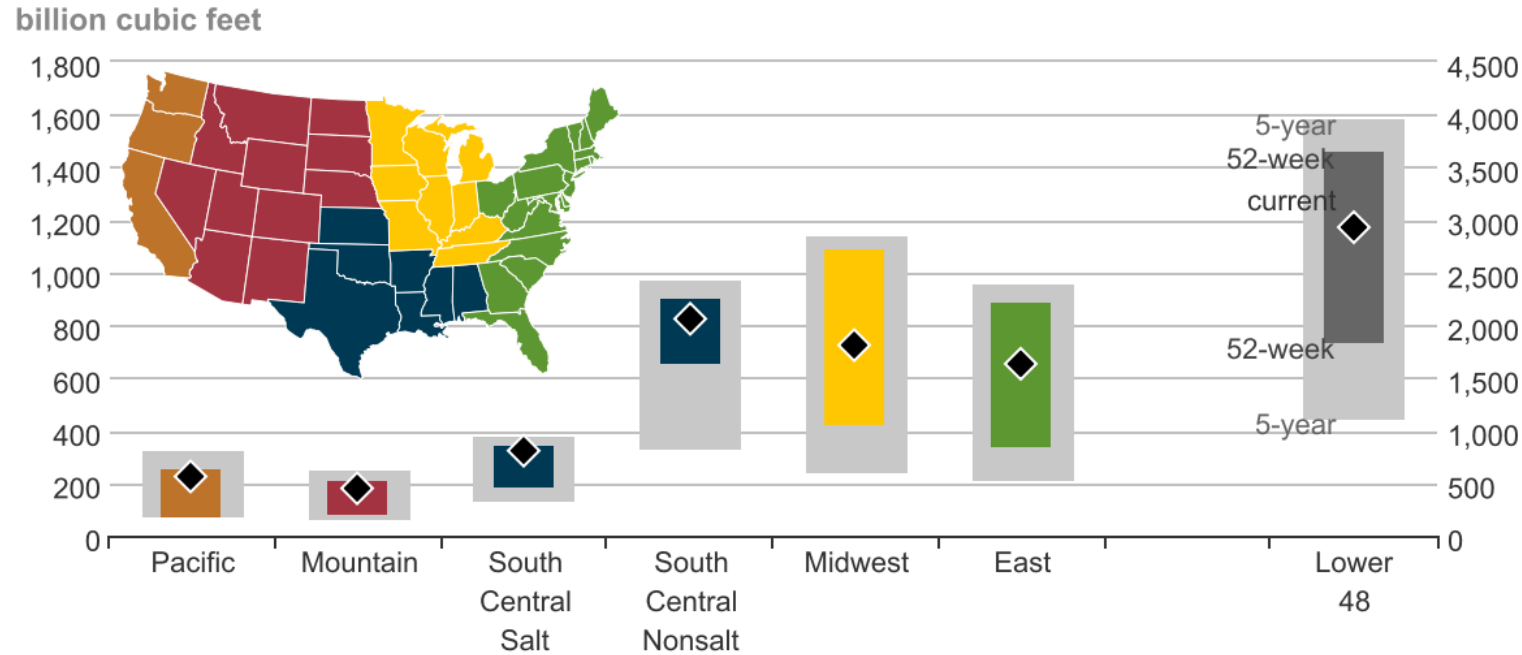
*above the  
five-year average*





# EIA storage position: The big picture

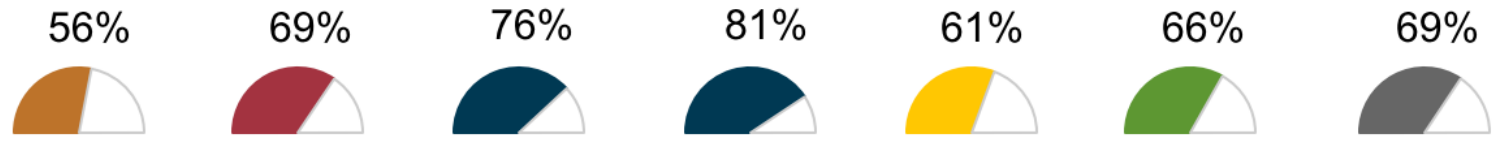
## Underground working natural gas storage summary as of July 7, 2023



**Lower 48**  
 current: 2,930  
 5-year min: 1,107  
 5-year max: 3,958  
 52-week min: 1,830  
 52-week max: 3,644

**Midwest**  
 current: 724  
 5-year min: 240  
 5-year max: 1,139  
 52-week min: 421  
 52-week max: 1,084

## Underground storage capacity utilization

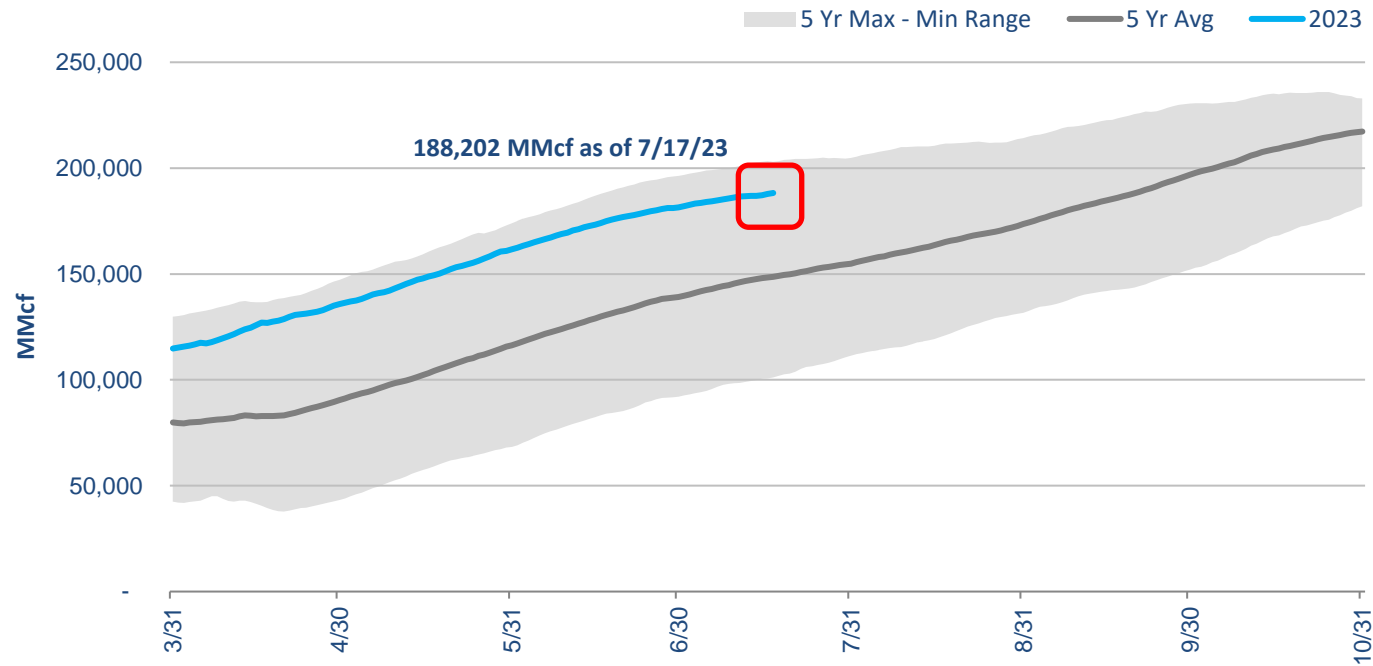


Source: U.S. Energy Information Administration



# Storage position

*Working gas in underground storage compared with the five-year maximum and minimum*



53  
bcf

*more than July 2022*

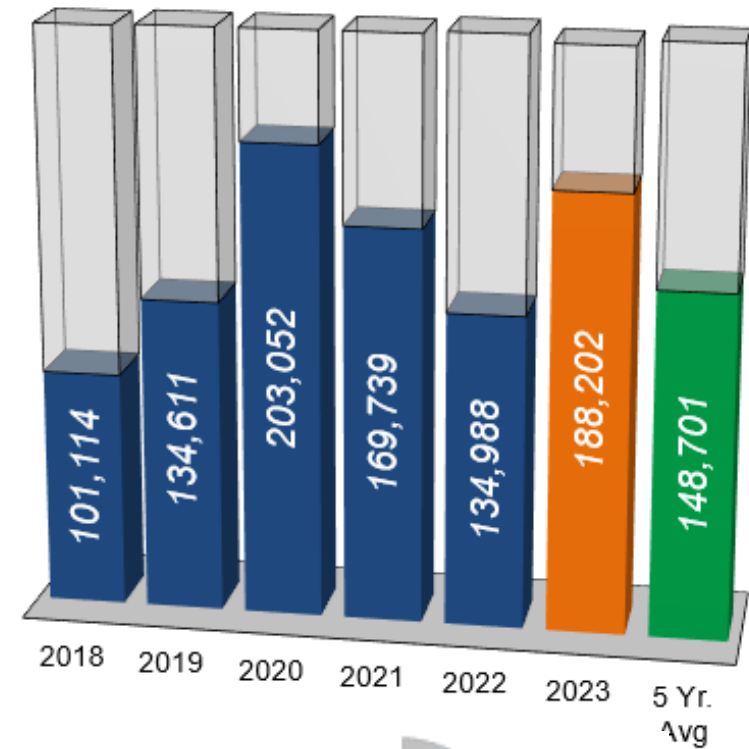
40  
bcf

*more than  
five-year average*



## Storage operations

- From Tuesday, June 20– Monday, July 17 storage activity averaged an injection rate of 424-MMcf/d. Daily activity varied from a max injection rate of 679-MMcf/d to a min injection rate of 3-MMcf/d.
- Storage capacity is at 76 percent, roughly halfway into the injection season.
- ANR has met all firm customer demand for storage activity.
- There is currently one posted restriction on storage activity. Until further notice, DDS and MBS account inventory levels will be restricted to equal or less than April 17<sup>th</sup> allocated levels starting September 29<sup>th</sup>.



**Total Storage is  
76% Full**



## Storage operations

- Storage activity is primarily on injection, but withdrawals are still possible under certain conditions.
- The available capacity will continue to be reflected on the EBB under the operationally available capacity

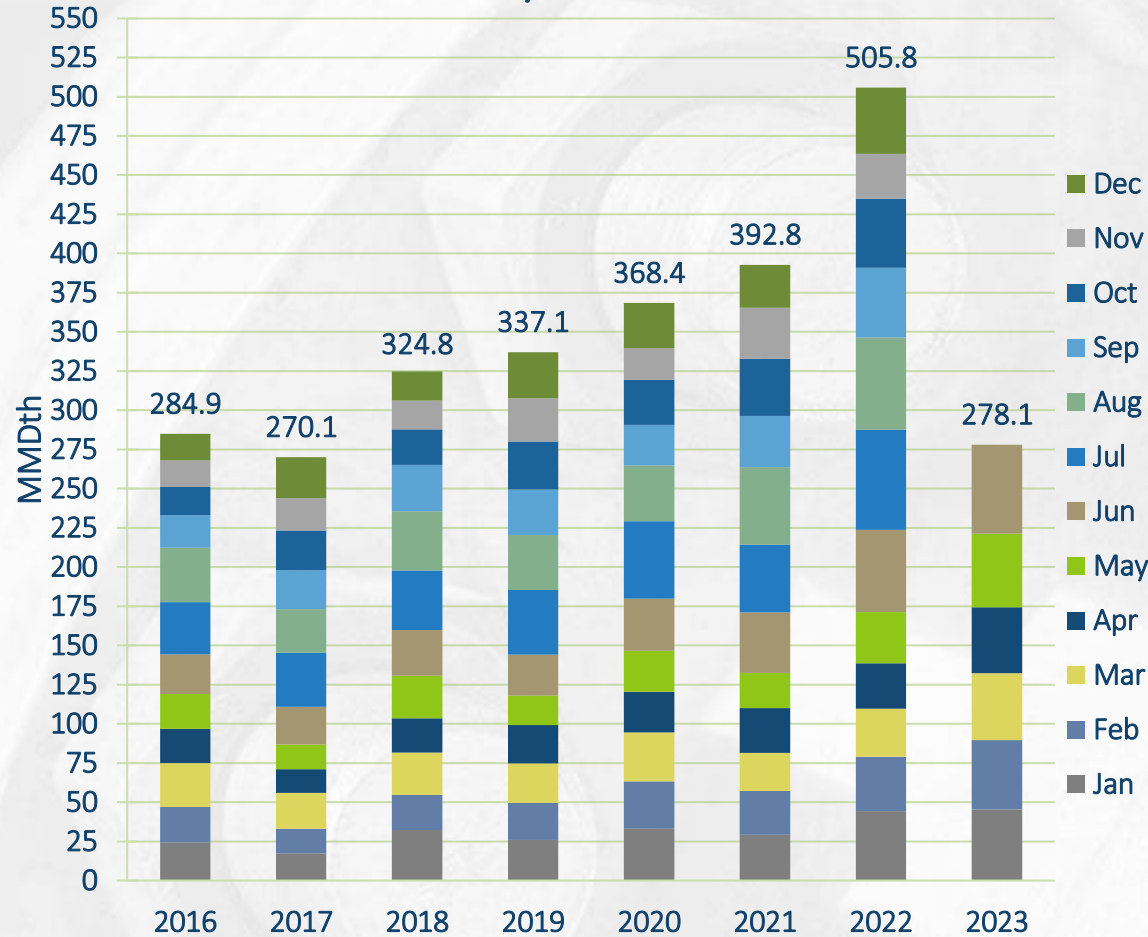


# Operational update

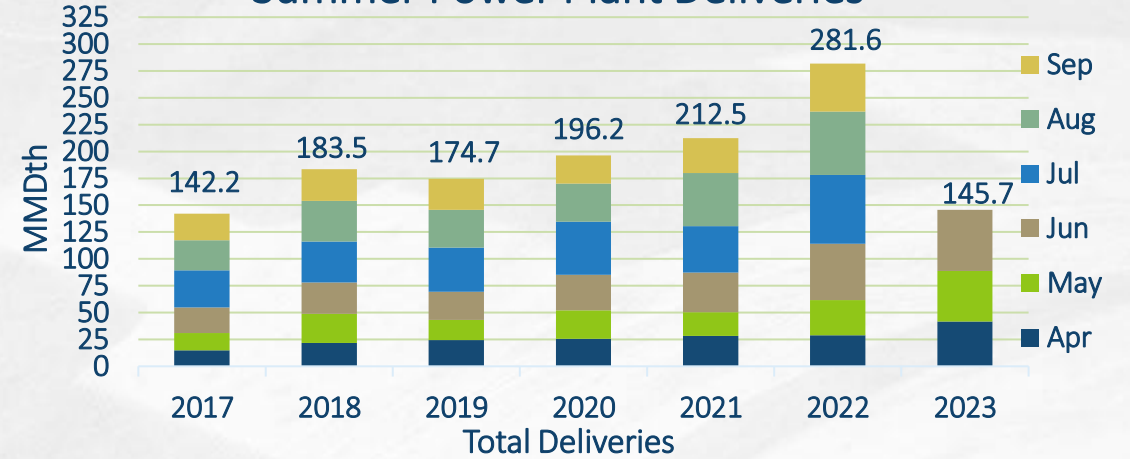
Brett Aler – Operations Planning

# ANR Monthly Deliveries to Power Plants

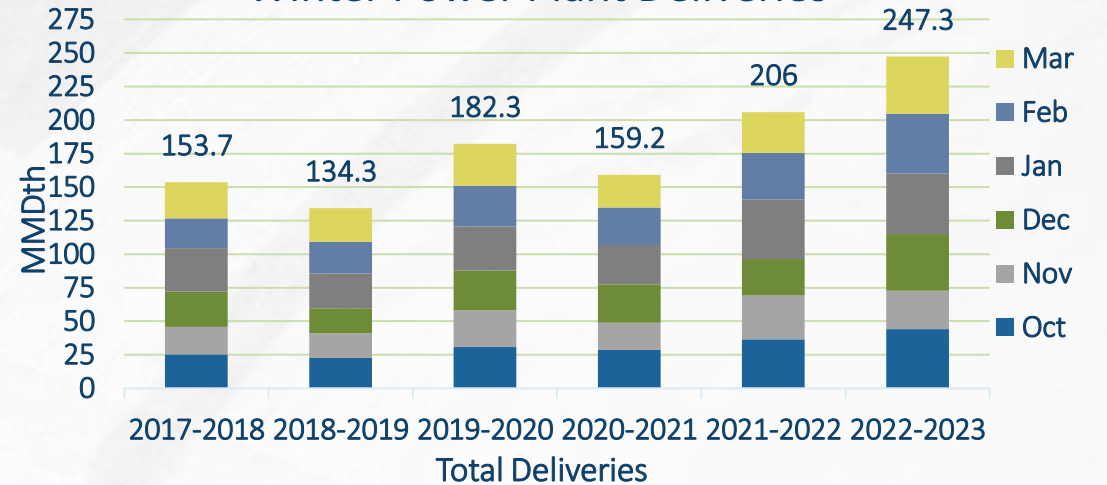
## Total Monthly Power Plant Deliveries



## Summer Power Plant Deliveries



## Winter Power Plant Deliveries



# Capacity impacts (SW Mainline & Area)

		Cap (MMcf/d)		July							August																														
Dates	Area/Segment/Location	Impact	Avail																																						
<b>Southwest Area &amp; Mainline</b>				25	26	27	28	29	30	31	1	2	3	4	5	6	7	8	9	10	11	12	13	14	15	16	17	18	19	20	21	22	23	24	25	26	27	28	29	30	31
<b>SWML Northbound (LOC # 226630)</b>																																									
7/24 - 9/8	Integrity Digs	140	550																																						
<b>EG Hill Northbound (LOC #226643)</b>																																									
7/24 - 7/28	ILI ANR 480 Gageby Creek to EG Hill CS	90	125																																						
<b>Custer Northbound (LOC #226644)</b>																																									
7/24 - 7/28	ILI ANR 480 Gageby Creek to EG Hill CS	5	35																																						
<b>Mooreland Northbound (LOC #9505448)</b>																																									
7/24 - 7/28	ILI ANR 480 Gageby Creek to EG Hill CS	40	166																																						





# Capacity impacts (Market Area & Storage)

		Cap (MMcf/d)		July							August																																
Dates	Area/Segment/Location	Impact	Avail																																								
<b>Market Area &amp; Storage</b>				25	26	27	28	29	30	31	1	2	3	4	5	6	7	8	9	10	11	12	13	14	15	16	17	18	19	20	21	22	23	24	25	26	27	28	29	30	31		
<b>Bridgman Northbound (LOC #226632)</b>																																											
8/15 - 8/31	Integrity Digs	120	1,480																																								



# Capacity impacts (SE Area)

		Cap (MMcf/d)		July							August																														
Dates	Area/Segment/Location	Impact	Avail																																						
<b>Southeast Area &amp; Mainline</b>				25	26	27	28	29	30	31	1	2	3	4	5	6	7	8	9	10	11	12	13	14	15	16	17	18	19	20	21	22	23	24	25	26	27	28	29	30	31
<b>Avalon (LOC #38295), Shadyside/TGP (Del) (LOC #467240),                      Patterson/Trunkline Del (LOC #40317), Patterson to Col Gulf (LOC #43613)</b>																																									
8/15 - 8/17	Patterson Electrical System Inspection	-	Shut-In																																						
<b>Riverway (To Bridgeline) (LOC #42593)</b>																																									
8/15 - 8/17	Patterson Electrical System Inspection	150	110																																						
<b>Shadyside/Sonat (Del) (LOC #10369)</b>																																									
8/15 - 8/17	Patterson Electrical System Inspection	487	70																																						
<b>ST Landry/FL INT (LOC #322625)</b>																																									
8/15 - 8/17	Patterson Electrical System Inspection	35	64																																						
<b>Eunice Southbound (LOC #226641)</b>																																									
8/1 - 8/29	Mermentau CS Maintenance	728	350																																						



# Capacity impacts (SE Mainline & Area)

		Cap (MMcf/d)		July							August																																				
Dates	Area/Segment/Location	Impact	Avail																																												
<b>Southeast Mainline</b>				25	26	27	28	29	30	31	1	2	3	4	5	6	7	8	9	10	11	12	13	14	15	16	17	18	19	20	21	22	23	24	25	26	27	28	29	30	31						
<b>Jena Southbound (LOC #9505489)</b>																																															
TBD	Delhi CS Unit 208 Wet Seal Repair	65	1,242																																												
<b>Delhi Southbound (LOC #1379345)</b>																																															
8/28 - 9/10	Integrity Dig	186	1,028																																												
TBD	Delhi CS Unit 208 Wet Seal Repair	160	1,054																																												
<b>Brownsville Southbound (LOC #1260569)</b>																																															
TBD	Brownsville CS C&M Inspection	239	988																																												
<b>Defiance Southbound (LOC #226637)</b>																																															
8/15 - 8/22	Integrity Digs 0-501 MP815.4	330	720																																												
<b>Cottage Grove Southbound (LOC #505614)</b>																																															
7/25 - 7/28	Cottae Grove CS ESD System Inspection	296	977																																												
8/3 - 8/14	Integrity Digs 1-501 MP612 & MP616	260	973																																												
8/23 - 8/31	Integrity Digs 0-501 MP567.42	244	989																																												



# Outage Postings

- Service impacts are estimates. Actual nominations, markets, weather and pipeline conditions determine any level of curtailments.
- Projects may be added, altered, delayed or cancelled. Emergent work cannot be planned and will happen from time to time.
- Notice of such planned work, including additions or changes, will be provided via a posting under the Planned Service Outage (PSO) category in GEMS. Emergent work will be posted under the Critical Notice category as soon as possible.



# Nominations & Scheduling update

DeAnna Parsell – Noms & Scheduling

## Reminders – Ranks during capacity curtailment

- ANR only considers ranks on the nominations associated within a particular contract when applying cuts
- You cannot rank one contract to take cuts to keep another contract whole
- If the same rank is used for all nominations on a contract, the cut will be distributed pro rata to each nomination
- Shifting ranks after timely will not reallocate previously scheduled nominations, as previously scheduled volumes are protected
- Changing ranks during the intra day cycles only impacts incremental gas



## Reminders – Penalties

- Penalties, unless waived, will be applied across the entire system on both Extreme Condition days and non-Extreme Condition days.
- Penalties are not additive. While shippers may be eligible for both Daily Scheduling and Unauthorized Overrun penalties, they will not be assessed both on the same dekatherms.
- Our intent is to prevent the impairment of reliable service, maintain system integrity, and deter conduct that may be harmful to other shippers.
- Shippers who nominate correctly and stay within the confines of their contracts will not be impacted.
- ANR does not keep penalty dollars – they are shared back to non-offending firm shippers.





# Reminders – Penalties

## Daily scheduling penalties

- Assessed to allocated volumes outside the Swing Percentage, up to the MDQ
- Subject to allocation rules set in place at each delivery location
- Applicable rate schedules: ETS, FTS-1, FTS-2, ITS
- 1 x applicable ITS rate/dth during non-Extreme Condition periods (*the greater of ten dollars (\$10.00) or two (2) times the Spot Price Index for the Service Month during Extreme Conditions*)
- 10% +/- scheduled volume tolerance during non-Extreme Condition periods (5% during Extreme Conditions)

## Unauthorized overrun

- To be assessed to allocated volumes in EXCESS of contract MDQ and scheduled overrun
- Subject to allocation rules set in place at each delivery location
- Applicable rate schedules: ETS, STS, PTS-2, FTS-1, FTS-2, FTS-3
- 2 x applicable ITS rate/dth during non-Extreme Condition periods (*the greater of ten dollars (\$10.00) or two (2) times the Spot Price Index for the Service Month during Extreme Conditions*)

At this time, penalty dollars associated with Daily Scheduling Penalties (DSPs), when the cumulative monthly infraction is less than 3,000 Dth per contract will be waived. Likewise, penalty dollars associated with Unauthorized Overrun Service (UOS), when the cumulative monthly infraction is less than 3,000 Dth per contract will be waived. ANR reserves the right to remove this waiver at any time. All waivers are posted at [www.anrpl.com](http://www.anrpl.com) -> Informational Postings -> Other -> Penalty Waiver Log



# ANR customer assistance

Please contact the ANR Noms & Scheduling team for customer assistance, including:

- Scheduling priorities
- Firm service rights and features
- GEMS new user training
- Virtual and face-to-face meetings



TOLL FREE

1-800-827-5267



GROUP EMAIL

[ANR\\_Noms\\_Scheduling@tcenergy.com](mailto:ANR_Noms_Scheduling@tcenergy.com)

[CustomerServiceWest@tcenergy.com](mailto:CustomerServiceWest@tcenergy.com)



WEBSITE FOR THE ANRPL  
TARIFF

[ebb.anrpl.com](http://ebb.anrpl.com)

Questions



US\$ 0.8	0.2	
US\$ 0.7	0.3	
US\$ 0.6	0.4	
US\$ 0.5	0.5	
US\$ 0.4	0.6	
US\$ 0.3	0.7	
US\$ 0.2	0.8	
US\$ 0.1	0.9	
US\$ 0.0	1.0	
Total Expenditure Equivalent		14.2